

# HSF

**NOTES:**

Rated Current:10.0AMP.(20°C,1\*2P-1\*10P)  
7.0AMP.(20°C,1\*11P-1\*20P)  $\triangle A2$

Contact Resistance:20m $\Omega$  Max.  
Withstand Voltage:1000V AC/DC  
Insulation Resistance:1000M $\Omega$  Min.

Operation Temperature: -40°C to +105°C(Tin Plating)  $\triangle A2$

Contact Material:Copper Alloy  
Contact Plating:Sn Over 30u" Min Ni  $\triangle A2$   
Insulator Material:LCP+G.F UL94V-0 BK

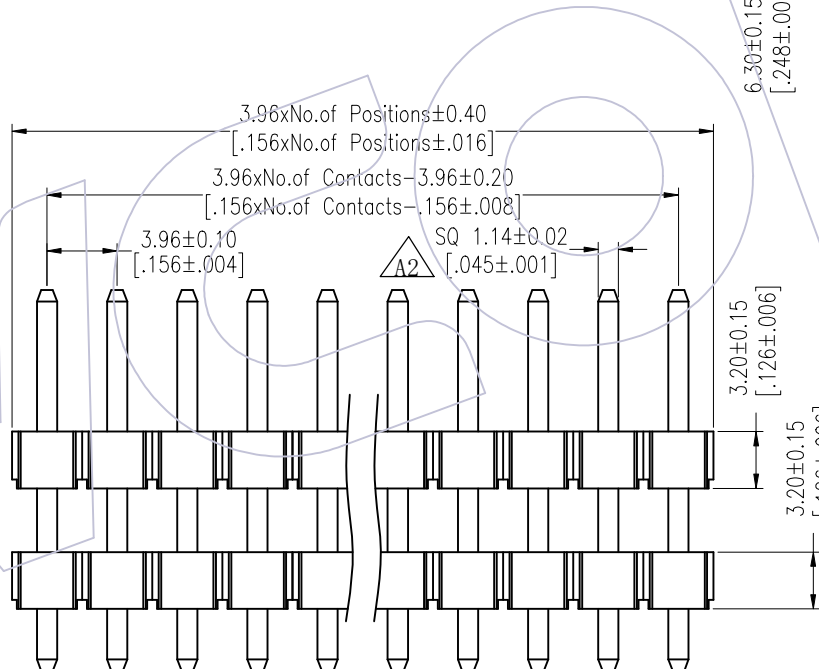
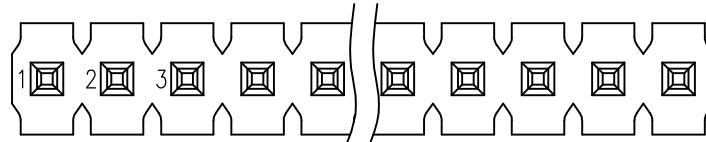
## Ordering Information

1832-2 1 XX XX S XXX X 0 XX  $\triangle A2$

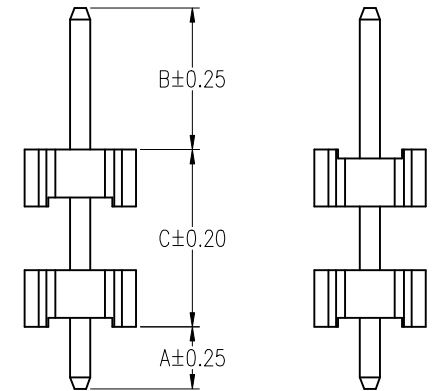
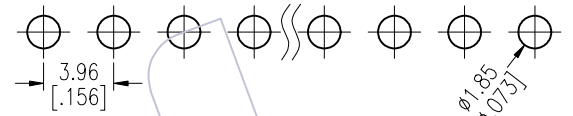
Plastic Layer  
Plastic Row  
No.of Pins Per Row:02-20  
Contact Plating  
SN=Bright Tin  
SM=Matte Tin

Series No. 01-99  
Packing 0=PE Bag  
Insulator Material D=LCP  
Pin Length L(See Table)  
Type: S=S/T

Item	Pin Length	A	B	C	Mating
Standard	18.0	3.6	8.0	6.4	2889
	21.0			9.3	
	25.5			14.0	
Standard	17.3	2.8 (THR)	8.0	6.4	2889
	20.0			9.3	
	24.8			14.0	
Alternate					



Recommended P.C.B Layout (Top Side)  
(PCB BOARD TOLERANCE  $\pm 0.05$ )  
(PCB Thickness:  $T=1.60\text{m}$ )



TYPE-1

TYPE-2

REV	DATE	MODIFICATION DESCRIPTION	CHANGE	OPERATION	DRAW	DATE	SCALE	Fit	PART NO.
A2	2025/10/07	Standardization Drawing	CP	x.X $\pm 0.40$	CP	2025/10/07	UNIT	mm [inch]	1832-21XXXXXXXDXXX $\triangle A2$
A1	2018/01/23	MODIFY PART NO.	William Chen	x.xx $\pm 0.25$	CHECK	2025/10/07	SIZE	A4	TITLE: 3.96 Pin Header, SINGLE ROW, S/T, DOUBLE PLASTIC, H=3.2
A0	2012/06/25	NEW	William Chen	x.xxx $\pm 0.15$	TANG	2025/10/07	SHEET	1/2	Customer NO.
				Angle $\pm 3'$	APPROVE	2025/10/07	PROJ.	$\phi$	
				DIM TOL	Steven Zhao				

**WCON**

Http: www.wcon.com

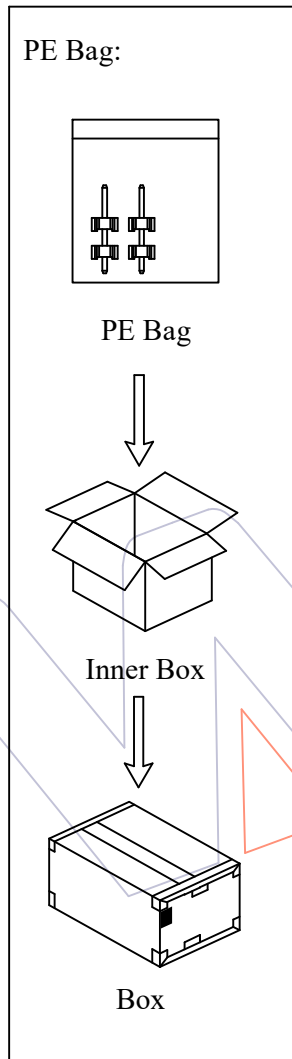
WCON-Dongguan  
Tel: +86 769 85358920  
Fax: +86 769 85358915  
E-mail: sales@wcon.com

WCON-Kunshan  
Tel: +86 512 57468408  
Fax: +86 512 57468468  
E-mail: salesks@wcon.com

# HSF

Packing:

Packaging Quantity Refers To The Following Table



PINS	Q' ty/Bag (17.3 ≤ L ≤ 18.0)	PINS	Q' ty/Bag (18.0 < L ≤ 21.0)	PINS	Q' ty/Bag (21.0 < L ≤ 25.5)
2	500	2	500	2	500
3	500	3	400	3	300
4	300	4	300	4	200
5	300	5	200	5	200
6	200	6	200	6	200
7	200	7	200	7	100
8	200	8	150	8	100
9	150	9	150	9	100
10	150	10	100	10	100
11	150	11	100	11	100
12	100	12	100	12	80
13	100	13	100	13	80
14	100	14	80	14	80
15	100	15	80	15	50
16	100	16	80	16	50
17	80	17	80	17	50
18	80	18	50	18	50
19	80	19	50	19	50
20	80	20	50	20	50

REV	DATE	MODIFICATION DESCRIPTION	CHANGE	OPERATION DIM TOL	DRAW CP TANG	DATE 2025/10/07	SCALE UNIT	Fit mm [inch]	PART NO. 1832-21XXXXXXXDXXX
A2	2025/10/07	Standardization Drawing	CP	x.X ±0.40	CP	2025/10/07			TITLE: 3.96 Pin Header, SINGLE ROW, S/T, DOUBLE PLASTIC, H=3.2
A1	2018/01/23	MODIFY PART NO.	William Chen	x.XX ±0.25	CHECK	2025/10/07	SIZE	A4	Customer NO.
A0	2012/06/25	NEW	William Chen	x.XXX ±0.15	TANG	2025/10/07	SHEET	2/2	
				Angle ± 3'	APPROVE Steven Zhao	DATE 2025/10/07	PROJ.		

## WCON

Http: www.wcon.com

WCON-Dongguan Tel: +86 769 85358920 Fax: +86 769 85358915 E-mail: sales@wcon.com	WCON-Kunshan Tel: +86 512 57468408 Fax: +86 512 57468468 E-mail: salesks@wcon.com
---	--