

HSF

NOTES:

Rated Current:5.0AMP.(20°C,1*2P-1*15P)
 3.0AMP.(20°C,1*16P-1*40P) A2

Contact Resistance:20mΩ Max.

Withstand Voltage:1000V AC/DC

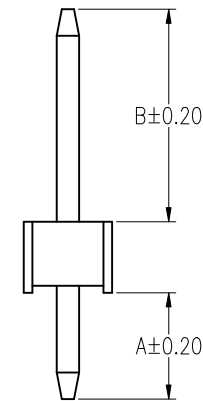
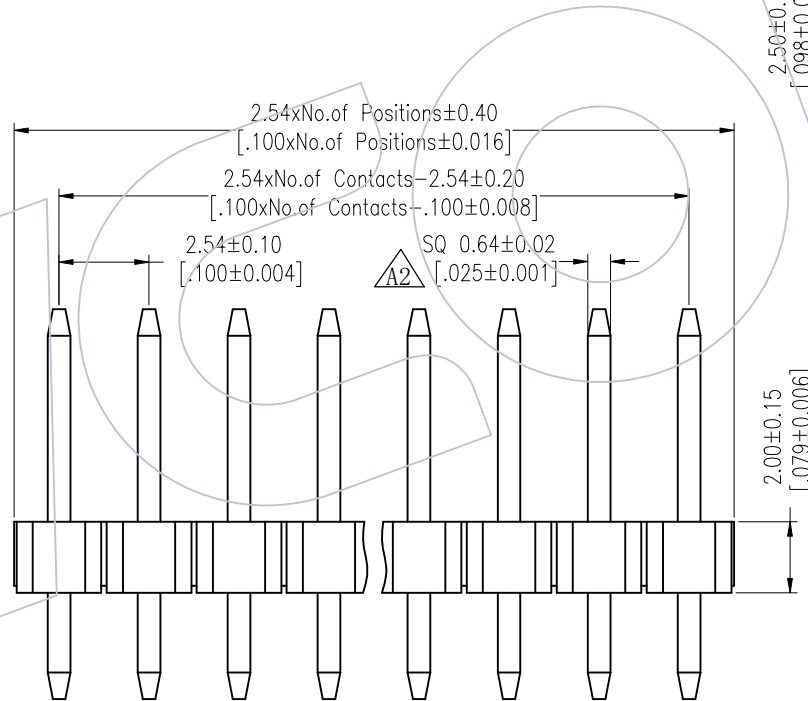
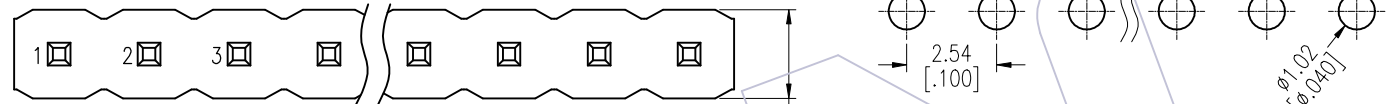
Insulation Resistance:1000MΩ Min.

Operation Temperature: -40°C to +125°C(Gold Plating) A2
 -40°C to +105°C(Tin Plating) A2

Contact Material: Copper Alloy

Contact Plating: Au or Sn Over 30u" Min Ni A2
 Insulator Material: PA9T+G.F UL94V-0 BK A2

Recommended P.C.B Layout (Top Side)
 (PCB BOARD TOLERANCE±0.05)
 (PCB Thickness: T=1.60m)




Ordering Information

1120-1 1 XX XX S XXX C 0 XX A1

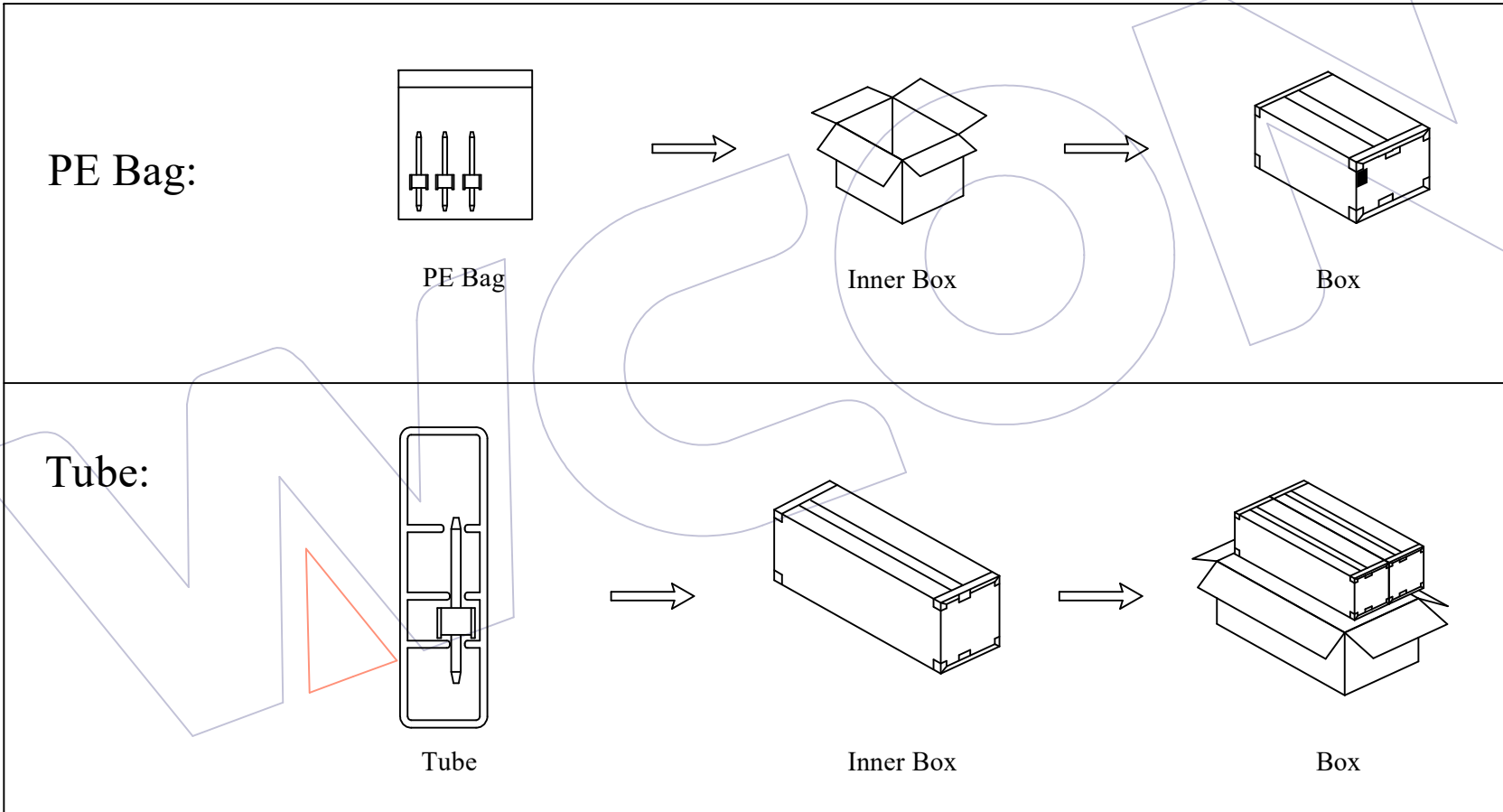
Plastic Layer
 Plastic Row
 No. of Pins
 Per Row: 02-40
 Contact Plating
 G0=Gold Flash
 G3=10u"Au, BG3=8u"PdNi+2u"Au
 G4=15u"Au, BG4=13u"PdNi+2u"Au
 G5=30u"Au, BG5=28u"PdNi+2u"Au
 S0=Gold Flash/Tin
 S3=10u"Au/Sn, P3=8u"PdNi+2u"Au/Sn
 S4=15u"Au/Sn, P4=13u"PdNi+2u"Au/Sn
 S5=30u"Au/Sn, P5=28u"PdNi+2u"Au/Sn
 SN=Bright Tin
 SM=Matte Tin
 Insulator Material
 C=PA9T
 Pin Length
 L(See Table)
 Type:
 S:S/T
 Packing
 0=PE Bag
 T=Tube
 Series No.
 01-99


Item	Pin Length	A	B	Mating
Standard	8.5	3.00	3.5	2135/2150T/2157
	9.0		4.0	2145/2150
	10.0		5.0	2168T/2171T
	10.8		5.84	2171/2185X
Standard	7.5	2.0 (THR)	3.5	2135/2150T/2157
	8.0		4.0	2145/2150
	9.0		5.0	2168T/2171T
	9.8		5.84	2171/2185X
Alternate				

REV	DATE	MODIFICATION DESCRIPTION	CHANGE	OPERATION	DRAW	DATE	SCALE	Fit	PART NO.	 Http: www.wcon.com WCON-Dongguan Tel: +86 769 85358920 Fax: +86 769 85358915 E-mail: sales@wcon.com WCON-Kunshan Tel: +86 512 57468408 Fax: +86 512 57468468 E-mail: salesks@wcon.com
A2	2025/03/26	Standardization Drawing	CP	x.X ±0.40	CP	2025/03/26	UNIT	mm	1120-11XXXXXXXCOXX	
A1	2018/01/22	Modify P/N	Ruipeng	x.XX ±0.25	CHECK	DATE	SIZE	A4	TITLE: PH2.54 SINGLE ROW 180° H=2.0	
AO	2012/05/07	NEW	William Chen	x.XXX ±0.15	TANG	2025/03/26	SHEET	1/3	Customer NO.	
				Angle ± 3°	APPROVE	DATE	PROJ.			
				DIM TOL	Steven Zhao	2025/03/26				

HSF

Packing:




REV	DATE	MODIFICATION DESCRIPTION	CHANGE	DIM	TOL	OPERATION	DRAW	DATE	SCALE	Fit	PART NO.	 Http: www.wcon.com WCON-Dongguan Tel: +86 769 85358920 WCON-Kunshan Tel: +86 512 57468408 Fax: +86 769 85358915 E-mail: sales@wcon.com
A2	2025/03/26	Standardization Drawing	CP	x.X	±0.40	CP	CP	2025/03/26	UNIT	mm	1120-11XXXXXXXCOXX	
A1	2018/01/22	Modify P/N	Ruipeng	x.XX	±0.25	CHECK	CHECK	DATE	SIZE	A4	TITLE:	
AO	2012/05/07	NEW	William Chen	x.XXX	±0.15	TANG	TANG	2025/03/26	SHEET	2/3	PH2.54 SINGLE ROW 180° H=2.0	
APPROVE	DATE	Customer NO.	Steven Zhao	Angle	± 3'	DATE	PROJ.	2025/03/26				

HSF

Packaging Quantity Refers To The Following Table

PINS	Q' ty/Bag (L≤10.0)	PINS	Q' ty/Bag (L≤10.0)	PINS	Q' ty/Bag (10.0<L≤16.0)	PINS	Q' ty/Bag (10.0<L≤16.0)	PINS	Q' ty/Tube	Q' ty/Inner Box	Q' ty/Box	PINS	Q' ty/Tube	Q' ty/Inner Box	Q' ty/Box
1	1000	21	300	1	1000	21	200	4	54	6,480	12,960	23	9	1,080	2,160
2	1000	22	300	2	1000	22	200	5	44	5,280	10,560	24	9	1,080	2,160
3	1000	23	300	3	1000	23	200	6	37	4,440	8,880	25	9	1,080	2,160
4	1000	24	300	4	1000	24	200	7	31	3,720	7,440	26	8	960	1,920
5	1000	25	300	5	1000	25	200	8	27	3,240	6,480	27	8	960	1,920
6	1000	26	300	6	1000	26	200	9	24	2,880	5,760	28	8	960	1,920
7	1000	27	300	7	1000	27	200	10	22	2,640	5,280	29	7	840	1,680
8	1000	28	300	8	500	28	200	11	20	2,400	4,800	30	7	840	1,680
9	1000	29	300	9	500	29	200	12	18	2,160	4,320	31	7	840	1,680
10	500	30	300	10	500	30	200	13	17	2,040	4,080	32	7	840	1,680
11	500	31	300	11	500	31	200	14	16	1,920	3,840	33	6	720	1,440
12	500	32	300	12	500	32	200	15	15	1,800	3,600	34	6	720	1,440
13	500	33	300	13	500	33	200	16	14	1,680	3,360	35	6	720	1,440
14	500	34	300	14	500	34	200	17	13	1,560	3,120	36	6	720	1,440
15	500	35	300	15	500	35	200	18	12	1,440	2,880	37	6	720	1,440
16	500	36	300	16	400	36	200	19	11	1,320	2,640	38	5	600	1,200
17	400	37	300	17	400	37	200	20	11	1,320	2,640	39	5	600	1,200
18	400	38	300	18	300	38	200	21	10	1,200	2,400	40	5	600	1,200
19	400	39	300	19	300	39	200	22	10	1,200	2,400				
20	400	40	300	20	200	40	200								

A2	2025/03/26	Standardization Drawing	CP	OPERATION	DRAW	DATE	SCALE	Fit	PART NO.	 Http: www.wcon.com WCON-Dongguan Tel: +86 769 85358920 WCON-Kunshan Tel: +86 512 57468408 Fax: +86 769 85358915 Fax: +86 512 57468468 E-mail: sales@wcon.com E-mail: sales@wcon.com
A1	2018/01/22	Modify P/N	Ruipeng	x.X ±0.40	CP	2025/03/26	UNIT	mm	1120-11XXXXXXCOXX	
AO	2012/05/07	NEW	William Chen	x.XX ±0.25	CHECK	DATE	SIZE	A4	TITLE:	
REV	DATE	MODIFICATION DESCRIPTION	CHANGE	x.XXX ±0.15	TANG	2025/03/26	SHEET	3/3	PH2.54 SINGLE ROW 180° H=2.0	
				Angle ± 3'	APPROVE	DATE	PROJ.	⊕	Customer NO.	
				DIM TOL	Steven Zhao	2025/03/26				