

HSF

NOTES:

Rated Current:3.0AMP.(20°C,3*2P-3*15P)
 2.0AMP.(20°C,3*16P-3*40P) $\triangle A3$
 Contact Resistance:20mΩ Max.
 Withstand Voltage:500V AC/DC
 Insulation Resistance:1000MΩ Min.
 Operation Temperature: -40°C to +125°C(Gold Plating) $\triangle A3$
 -40°C to +105°C(Tin Plating) $\triangle A3$

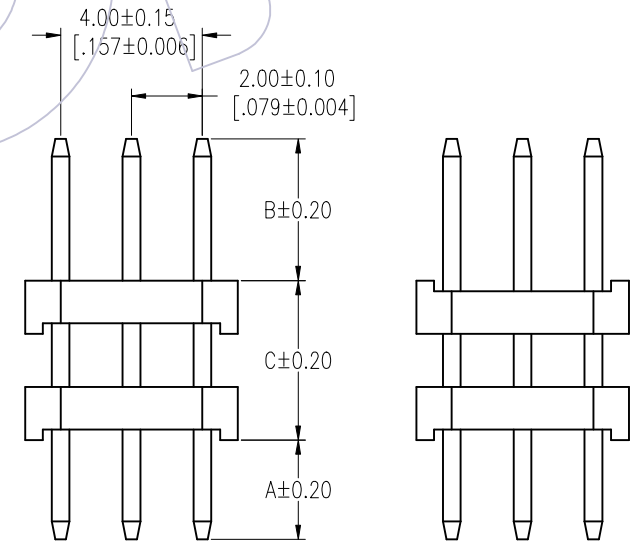
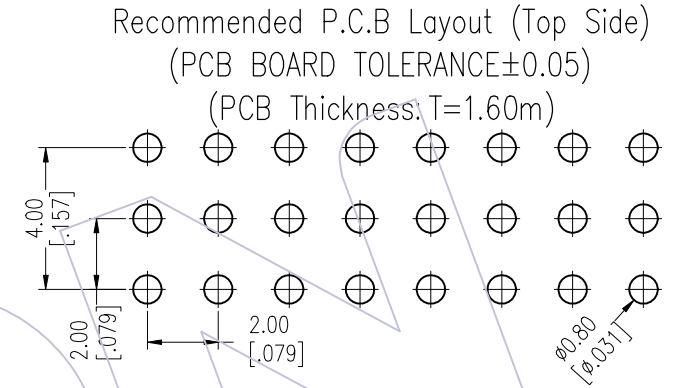
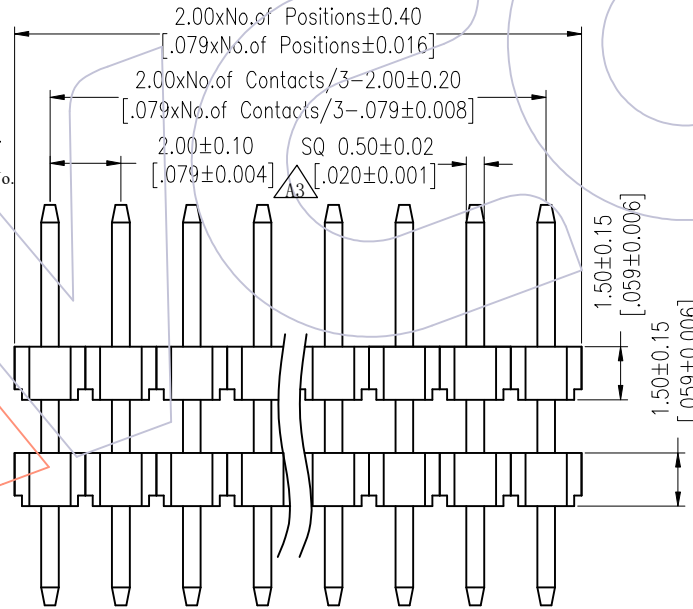
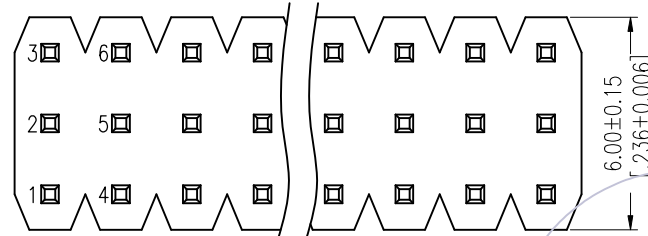
Contact Material:Copper Alloy
 Contact Plating:Au or Sn Over 30u" Min Ni $\triangle A3$
 Insulator Material:PA9T+G.F UL94V-0 BK $\triangle A3$

Ordering Information

1215- 2 3 XX XX S XXX C 0 XX $\triangle A1$

Plastic Layer
 Plastic Row
 No. of Pins Per Row:02~40 $\triangle A2$
 Contact Plating
 G0=Gold Flash
 G3=10u"Au, BG3=8u"PdNi+2u"Au
 G4=15u"Au, BG4=13u"PdNi+2u"Au
 G5=30u"Au, BG5=28u"PdNi+2u"Au
 S0=Gold Flash/Tin
 S3=10u"Au/Sn, P3=8u"PdNi+2u"Au/Sn
 S4=15u"Au/Sn, P4=13u"PdNi+2u"Au/Sn
 S5=30u"Au/Sn, P5=28u"PdNi+2u"Au/Sn
 SN=Bright Tin $\triangle A3$
 SM=Matte Tin

Series No. 01~99
 Packing 0=PE Bag
 Insulator Material C=PA9T
 Pin Length L(See Table)
 Type: S:S/T



TYPE 1

TYPE 2

A3	2025/07/31	Standardization Drawing	CP	OPERATION	DRAW	DATE	SCALE	Fit	PART NO.
A2	2020/06/12	Modify Pin 03~40P	Du Ying	x.X ±0.40	CP	2025/07/31	UNIT	mm	1215-23XXXXXXCXXX $\triangle A1$
A1	2018/01/18	Modify P/N	Liu	x.XX ±0.25	CHECK	DATE	SIZE	A4	TITLE:
A0	2012/04/18	NEW	William Chen	x.XXX ±0.15	TANG	2025/07/31	SHEET	1/3	PH2.00 THREE ROW DOUBLE PLASTIC 180° H=1.5
REV	DATE	MODIFICATION DESCRIPTION	CHANGE	Angle ± 3'	APPROVE	DATE	PROJ.		Customer NO.
				DIM TOL	Steven Zhao	2025/07/31			

WCON
 Http: www.wcon.com

WCON-Dongguan
 Tel: +86 769 85358920
 Fax: +86 769 85358915
 E-mail: sales@wcon.com

WCON-Kunshan
 Tel: +86 512 57468408
 Fax: +86 512 57468468
 E-mail: sales@wcon.com

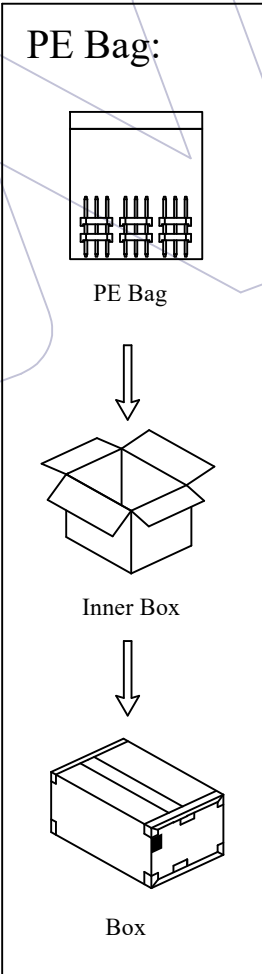
HSF

Table 1

Item	L	C	A	B	Mating
Standard	12.3	7.0	2.8	2.5	2220T/2221/2228
	12.8			3.0	2227T/2228T/2245
	13.3			3.5	2235/2240N/2243C
	13.8			4.0	2240/2243/2245T/2263/2272
	13.3	8.0		2.5	2220T/2221/2228
	13.8			3.0	2227T/2228T/2245
	14.2			3.5	2235/2240N/2243C
	14.8			4.0	2240/2243/2245T/2263/2272
	15.0	9.8		2.5	2220T/2221/2228
	15.5			3.0	2227T/2228T/2245
	16.0			3.5	2235/2240N/2243C
	16.5			4.0	2240/2243/2245T/2263/2272
	16.3	10.9		2.5	2220T/2221/2228
	16.8			3.0	2227T/2228T/2245
	17.2			3.5	2235/2240N/2243C
	17.8			4.0	2240/2243/2245T/2263/2272
	17.5	12.2		2.5	2220T/2221/2228
	18.0			3.0	2227T/2228T/2245
	18.5			3.5	2235/2240N/2243C
	19.0			4.0	2240/2243/2245T/2263/2272
21.3	15.9	2.5	2220T/2221/2228		
21.8		3.0	2227T/2228T/2245		
22.2		3.5	2235/2240N/2243C		
22.7		4.0	2240/2243/2245T/2263/2272		
Alternate					

Item	L	C	A	B	Mating
Standard	11.5	7.0	2.00 (THR)	2.5	2220T/2221/2228
	12.0			3.0	2227T/2228T/2245
	12.5			3.5	2235/2240N/2243C
	13.0			4.0	2240/2243/2245T/2263/2272
	12.5	8.0		2.5	2220T/2221/2228
	13.0			3.0	2227T/2228T/2245
	13.5			3.5	2235/2240N/2243C
	14.0			4.0	2240/2243/2245T/2263/2272
	14.2	9.8		2.5	2220T/2221/2228
	14.8			3.0	2227T/2228T/2245
	15.3			3.5	2235/2240N/2243C
	15.8			4.0	2240/2243/2245T/2263/2272
	15.3	10.9		2.5	2220T/2221/2228
	15.8			3.0	2227T/2228T/2245
	16.3			3.5	2235/2240N/2243C
	16.8			4.0	2240/2243/2245T/2263/2272
	16.8	12.2		2.5	2220T/2221/2228
	17.5			3.0	2227T/2228T/2245
	17.8			3.5	2235/2240N/2243C
	18.5			4.0	2240/2243/2245T/2263/2272
20.3	15.9	2.5	2220T/2221/2228		
20.8		3.0	2227T/2228T/2245		
21.3		3.5	2235/2240N/2243C		
21.8		4.0	2240/2243/2245T/2263/2272		
Alternate					

Packing:



A3	2025/07/31	Standardization Drawing	CP	OPERATION	DRAW	DATE	SCALE	Fit	PART NO.
A2	2020/06/12	Modify Pin 03~40P	Du Ying	x.X ±0.40	CP	2025/07/31	UNIT	mm	1215-23XXXXXXXCXXX
A1	2018/01/18	Modify P/N	Liu	x.xx ±0.25	CHECK	DATE	SIZE	A4	TITLE:
A0	2012/04/18	NEW	William Chen	x.xxx ±0.15	TANG	2025/07/31	SHEET	2/3	PH2.00 THREE ROW DOUBLE PLASTIC 180° H=1.5
REV	DATE	MODIFICATION DESCRIPTION	CHANGE	Angle ± 3'	APPROVE	DATE	PROJ.		Customer NO.
				DIM TOL	Steven Zhao	2025/07/31			

Http: www.wcon.com

<p>WCON-Dongguan Tel: +86 769 85358920 Fax: +86 769 85358915 E-mail: sales@wcon.com</p>	<p>WCON-Kunshan Tel: +86 512 57468408 Fax: +86 512 57468468 E-mail: salesks@wcon.com</p>
---	--

HSF

Packaging Quantity Refers To The Following Table

PINS /Row	Q'ty/Bag (11.5 ≤ L ≤ 14.8)	PINS /Row	Q'ty/Bag (11.5 ≤ L ≤ 14.8)	PINS /Row	Q'ty/Bag (15.0 ≤ L ≤ 18.5)	PINS /Row	Q'ty/Bag (15.0 ≤ L ≤ 18.5)	PINS /Row	Q'ty/Bag (19.0 ≤ L ≤ 22.7)	PINS /Row	Q'ty/Bag (19.0 ≤ L ≤ 22.7)
2	2000	22	200	2	1000	22	100	2	1000	22	100
3	1000	23	200	3	1000	23	100	3	800	23	100
4	1000	24	100	4	800	24	100	4	700	24	100
5	800	25	100	5	700	25	100	5	500	25	100
6	600	26	100	6	500	26	100	6	400	26	100
7	600	27	100	7	500	27	100	7	400	27	100
8	500	28	100	8	400	28	100	8	300	28	100
9	500	29	100	9	400	29	100	9	300	29	100
10	300	30	100	10	300	30	100	10	200	30	50
11	400	31	100	11	300	31	100	11	200	31	50
12	300	32	100	12	300	32	100	12	200	32	50
13	300	33	100	13	200	33	100	13	200	33	50
14	300	34	100	14	200	34	100	14	200	34	50
15	300	35	100	15	200	35	100	15	200	35	50
16	300	36	100	16	200	36	100	16	100	36	50
17	200	37	100	17	200	37	50	17	100	37	50
18	200	38	100	18	200	38	50	18	100	38	50
19	200	39	100	19	100	39	50	19	100	39	50
20	200	40	100	20	100	40	50	20	100	40	50
21	200			21	100			21	100		

A3	2025/07/31	Standardization Drawing	CP	OPERATION	DRAW	DATE	SCALE	Fit	PART NO.
A2	2020/06/12	Modify Pin 03~40P	Du Ying	x.X ±0.40	CP	2025/07/31	UNIT	mm	1215-23XXXXXXXCXXX Δ
A1	2018/01/18	Modify P/N	Liu	x.xx ±0.25	CHECK	DATE	SIZE	A4	TITLE:
A0	2012/04/18	NEW	William Chen	x.xxx ±0.15	TANG	2025/07/31	SHEET	3/3	PH2.00 THREE ROW DOUBLE PLASTIC 180° H=1.5
REV	DATE	MODIFICATION DESCRIPTION	CHANGE	Angle ± 3'	APPROVE	DATE	PROJ.	ϕ \leftarrow	Customer NO.
				DIM TOL	Steven Zhao	2025/07/31			

WCON
 Http: www.wcon.com
 WCON-Dongguan Tel: +86 769 85358920
 WCON-Kunshan Tel: +86 512 57468408
 Fax: +86 769 85358915 Fax: +86 512 57468468
 E-mail: sales@wcon.com E-mail: salesks@wcon.com