

HSF

NOTES:

Rated Current: 3.0AMP.(20°C,1*2P-1*15P)
2.0AMP.(20°C,1*16P-1*40P)

Contact Resistance: 20mΩ Max.

Withstand Voltage: 500V AC/DC

Insulation Resistance: 1000MΩ Min.

Operation Temperature: -40°C to +125°C (Gold Plating) $\triangle A2$ $\triangle A4$
-40°C to +105°C (Tin Plating)

Contact Material: Copper Alloy

Contact Plating: Au or Sn Over 30u" Min Ni $\triangle A4$

Insulator Material: PA9T+G.F UL94V-0 BK $\triangle A4$

Ordering Information

1215- 1 1 XX XX S XXX C 0 XX $\triangle A1$

Plastic Layer

Plastic Row

No. of Pins

Per Row: 02-40 $\triangle A3$

Contact Plating

G0=Gold Flash

G3=10u"Au, BG3=8u"PdNi+2u"Au

G4=15u"Au, BG4=13u"PdNi+2u"Au

G5=30u"Au, BG5=28u"PdNi+2u"Au

S0=Gold Flash/Tin

S3=10u"Au/Sn, P3=8u"PdNi+2u"Au/Sn

S4=15u"Au/Sn, P4=13u"PdNi+2u"Au/Sn

S5=30u"Au/Sn, P5=28u"PdNi+2u"Au/Sn $\triangle A4$

SN=Bright Tin

SM=Matte Tin

Series No.
01-99

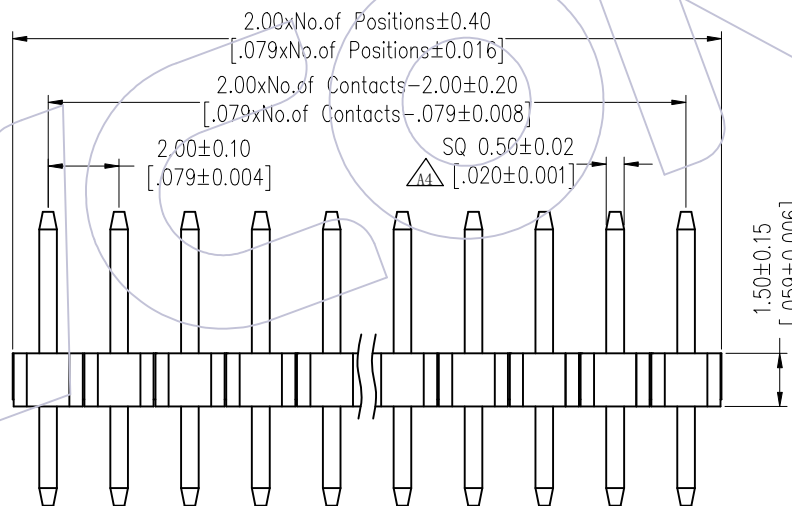
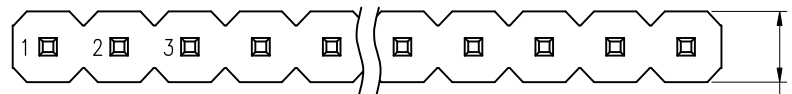
Packing
0=PE Bag
T=Tube

Insulator Material
C=PA9T

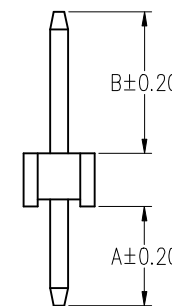
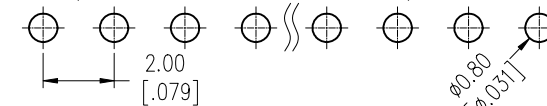
Pin Length
L(See Table)

Type:
S:S/T $\triangle A4$

Item	Pin Length	A	B	Mating
Standard	6.8	2.80	2.5	2220T/2221/2228
	7.3		3.0	2227T/2228T/2245
	7.8		3.5	2235/2240N/2243C
	8.3		4.0	2240/2243/2245T/2263/2272
Standard	6.0	2.0 THR	2.5	2220T/2221/2228
	6.5		3.0	2227T/2228T/2245
	7.0		3.5	2235/2240N/2243C
	7.5		4.0	2240/2243/2245T/2263/2272
Alternate				



Recommended P.C.B Layout (Top Side)
(PCB BOARD TOLERANCE ± 0.05)
(PCB Thickness: T=1.60mm)



REV	DATE	MODIFICATION DESCRIPTION	CHANGE	DIM	TOL	OPERATION	DATE	SCALE	Fit	PART NO.
A4	2025/04/03	Standardization Drawing	CP			OPERATION	2025/04/03	UNIT	mm	1215-11XXXXXXC0XX $\triangle A1$
A3	2020/06/11	Modify Pin 02~40P	DuYing	x.xx	± 0.40	CHECK	2025/04/03	SIZE	A4	TITLE:
A2	2019/02/28	Modify	Ding	x.xx	± 0.25	TANG	2025/04/03	SHEET	1/3	PH2.00 SINGLE ROW 180° H=1.5
A0	2012/04/18	NEW	William Chen	Angle	± 3°	APPROVE	2025/04/03	PROJ.		Customer NO.
						Steven Zhao				

WCON

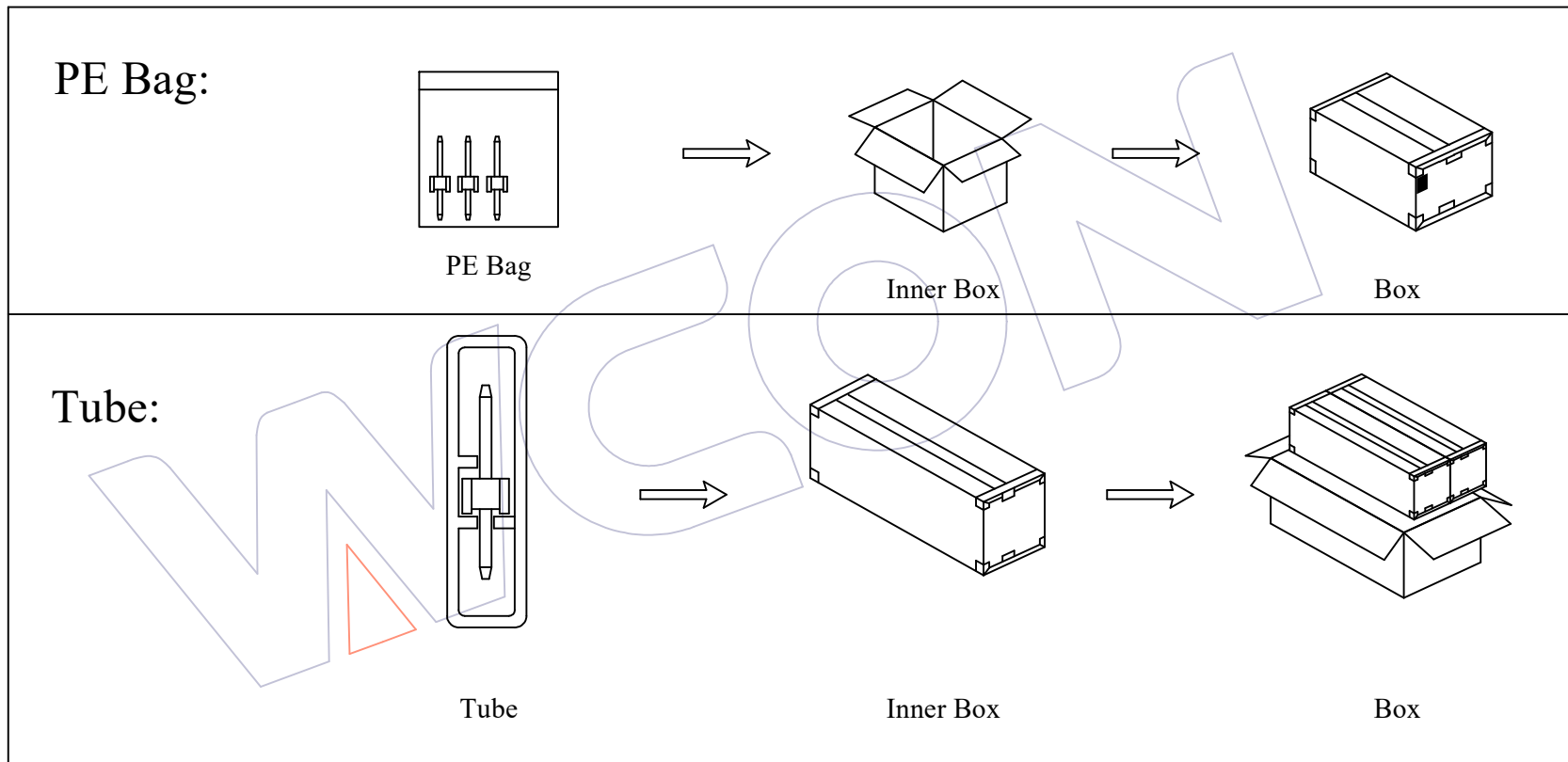
Http: www.wcon.com

WCON-Dongguan Tel: +86 769 85358920 Fax: +86 769 85358915 E-mail: sales@wcon.com

WCON-Kunshan Tel: +86 512 57468408 Fax: +86 512 57468468 E-mail: salesks@wcon.com

HSF

Packing:



A4	2025/04/03	Standardization Drawing	CP	OPERATION		DRAW	DATE	SCALE	Fit	PART NO. 1215-11XXXXSXXC0XX Δ
A3	2020/06/11	Modify Pin 02~40P	DuYing	x.x	± 0.40	CP	2025/04/03	UNIT	mm	
A2	2019/02/28	Modify	Ding	x.xx	± 0.25	CHECK	DATE	SIZE	A4	PH2.00 SINGLE ROW 180° H=1.5
A0	2012/04/18	NEW	William Chen	x.xxx	± 0.15	TANG	2025/04/03	SHEET	2/3	
REV	DATE	MODIFICATION DESCRIPTION	CHANGE	Angle	$\pm 3'$	APPROVE	DATE	PROJ.	ϕ \leftarrow	Customer NO.
				DIM	TOL	Steven Zhao	2025/04/03			

WCON

Http: www.wcon.com

WCON-Dongguan
Tel: +86 769 85358920
Fax: +86 769 85358915
E-mail: sales@wcon.com

WCON-Kunshan
Tel: +86 512 57468408
Fax: +86 512 57468468
E-mail: salesks@wcon.com

HSF



Packaging Quantity Refers To The Following Table

PINS	Q'ty/Bag (L ≤ 10.0)
1	1000
2	1000
3	1000
4	1000
5	1000
6	1000
7	1000
8	1000
9	1000
10	500
11	500
12	500
13	500
14	500
15	500
16	500
17	500
18	300
19	300
20	300

PINS	Q'ty/Bag (L ≤ 10.0)
21	300
22	300
23	300
24	300
25	300
26	300
27	300
28	300
29	300
30	200
31	200
32	200
33	200
34	200
35	200
36	200
37	200
38	200
39	200
40	200

PINS	Q'ty/Tube	Q'ty/Inner Box	Q'ty/Box
4	72	34,560	69,120
5	58	27,840	55,680
6	48	23,040	46,080
7	41	19,680	39,360
8	36	17,280	34,560
9	32	15,360	30,720
10	29	13,920	27,840
11	25	12,000	24,000
12	24	11,520	23,040
13	21	10,080	20,160
14	20	9,600	19,200
15	19	9,120	18,240
16	17	8,160	16,320
17	16	7,680	15,360
18	15	7,200	14,400
19	15	7,200	14,400
20	14	6,720	13,440
21	13	6,240	12,480
22	13	6,240	12,480

PINS	Q'ty/Tube	Q'ty/Inner Box	Q'ty/Box
23	12	5,760	11,520
24	11	5,280	10,560
25	11	5,280	10,560
26	11	5,280	10,560
27	10	4,800	9,600
28	10	4,800	9,600
29	9	4,320	8,640
30	9	4,320	8,640
31	9	4,320	8,640
32	9	4,320	8,640
33	8	3,840	7,680
34	8	3,840	7,680
35	8	3,840	7,680
36	8	3,840	7,680
37	7	3,360	6,720
38	7	3,360	6,720
39	7	3,360	6,720
40	7	3,360	6,720

A4	2025/04/03	Standardization Drawing	CP	OPERATION	DRAW	DATE	SCALE	Fit	PART NO. 1215-11XXXXXXXCOXX 
A3	2020/06/11	Modify Pin 02~40P	DuYing	x.x ±0.40	CP	2025/04/03	UNIT	mm	TITLE:
A2	2019/02/28	Modify	Ding	x.xx ±0.25	CHECK	DATE	SIZE	A4	PH2.00 SINGLE ROW 180° H=1.5
A0	2012/04/18	NEW	William Chen	x.xxx ±0.15	TANG	2025/04/03	SHEET	3/3	Customer NO.
REV	DATE	MODIFICATION DESCRIPTION	CHANGE	Angle ± 3°	APPROVE	DATE	PROJ.		
				DIM TOL	Steven Zhao	2025/04/03			

WCON

Http: www.wcon.com

WCON-Dongguan Tel: +86 769 85358920 Fax: +86 769 85358915 E-mail: sales@wcon.com	WCON-Kunshan Tel: +86 512 57468408 Fax: +86 512 57468468 E-mail: salesks@wcon.com
---	--