

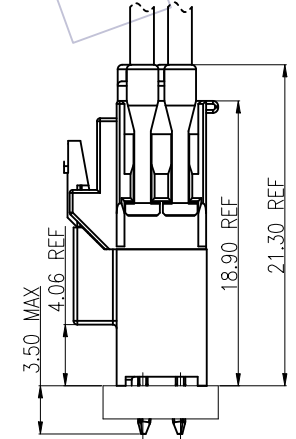
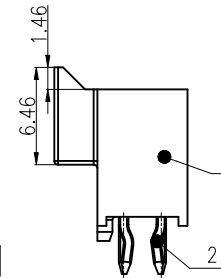
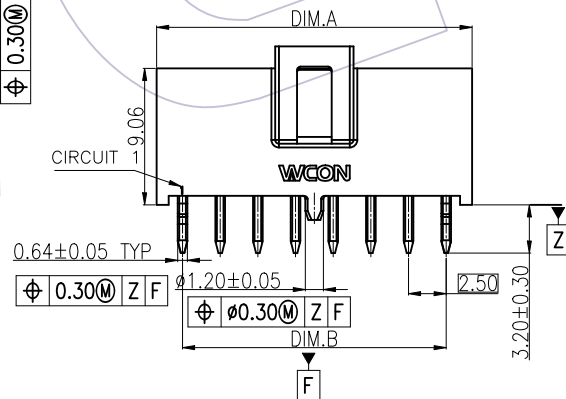
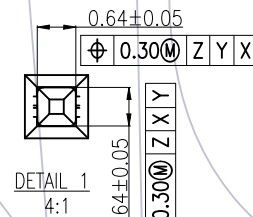
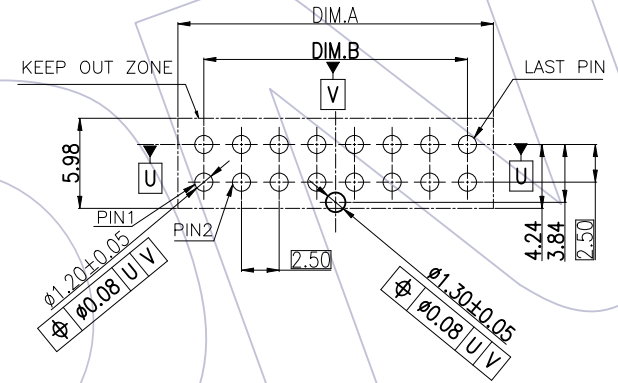
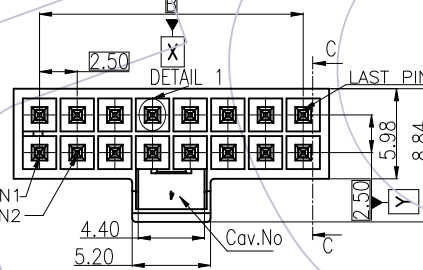
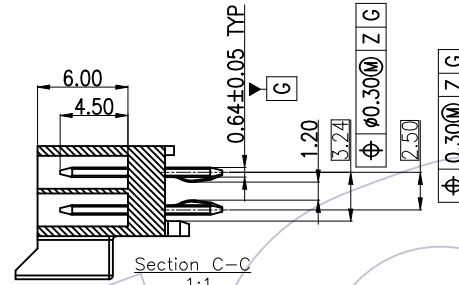
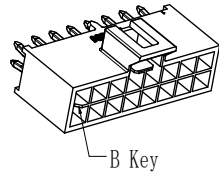
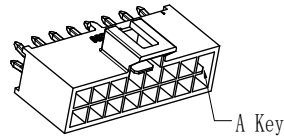
HSF

PRELIMINARY

RECOMMENDED PCB LAYOUT (CONNECTOR SIDE VIEW)
 TOLERANCE±0.05
 THICKNESS:1.60 TO 2.400 MM

NOTES:

1. Rated Current:See Table1;
2. Voltage Rating:250V ;
3. Contact Resistance:Initial:10mΩ Max.
Final:20mΩ Max;
4. Withstand Voltage:1500V AC;
5. Insulation Resistance:1000MΩ Min;
6. Operation Temperature:-40°C to +125°C;
7. Contact Material: copper alloy;
8. Contact Plating:
Under Plating Nickel 50u" ;Solder Area: Bright Tin 60u" Min;
Contact Area: Au Or Sn
9. Insulator Body Material: LCP,G,F, UL94V-0 ;
10. Recommended process:
Wave Solder,Peak temperature:260±5°C,5S.



Ordering Information

WF 2508-2 WS H XX XX X X 1
 Dual Rows
 180°Dip
 High Temperature Plastic
 NO.Of Pins Per Row
 02 ~ 8Pin

Package A=Tray
 Housing Color
 T=Natural
 B=Black
 Contact Plating
 S1=3u"Gold/Tin
 S4=15u"Gold/Tin
 S5=30u"Gold/Tin
 BLank=Bright Tin

2	Short Terminal	Brass	Whole Pin
1	Body	LCP	1
NO.	Part Name	Material	Q'TY

				OPERATION	DRAW	DATE	SCALE	Fit	PART NO.
				x.	Dean.Lin	2022/06/06	UNIT	mm	WF2508-2WSHXXXXX1
				x.x	CHECK	DATE	SIZE	[inch]	TITLE:
				x.xx	APPROVE	DATE	SHEET	A4	2.5*2.5mm Wafer Dual Rows, 180°DIP, KINK
01	2022/06/06	NEW	Dean.Lin	Angle ± 3°			PROJ.	1/2	Customer NO.
REV	DATE	MODIFICATION DESCRIPTION	CHANGE	DIM TOL					

WCON

Http: www.wcon.com

WCON-Dongguan
 Tel: +86 769 85358920
 Fax: +86 769 85358915
 E-mail: sales@wcon.com

WCON-Kunshan
 Tel: +86 512 57468408
 Fax: +86 512 57468468
 E-mail: salesks@wcon.com

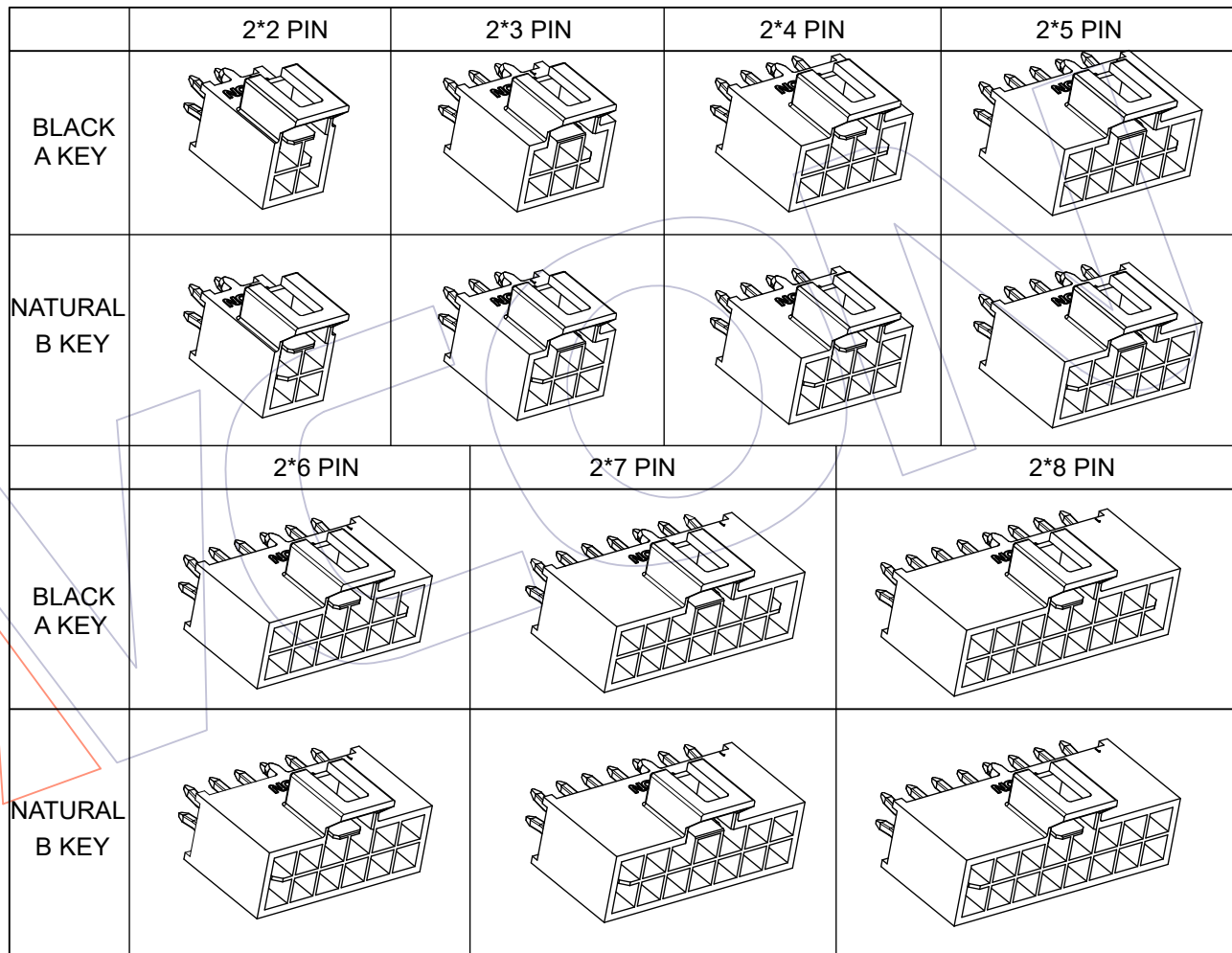
HSF

PRELIMINARY

Pin	DIM.	
	A	B
2*2	5.94	2.50
2*3	8.44	5.00
2*4	10.94	7.50
2*5	13.44	10.00
2*6	15.94	12.50
2*7	18.44	15.00
2*8	20.94	17.50

Table1

Connector fully loaded with all circuits powered								
PIN Current AWG Rating	Ckt Size(Single row)							
	2*2	2*3	2*4	2*5	2*6	2*7	2*8	
20	7.5	7.1	6.8	6.5	6.1	5.8	5.5	
22	5.5	5.2	5.0	4.7	4.5	4.2	4.0	
24	5.5	5.1	4.8	4.5	4.1	3.8	3.5	
26	4.0	3.8	3.6	3.5	3.3	3.1	3.0	



3D VIEW

REV	DATE	MODIFICATION DESCRIPTION	CHANGE	OPERATION	DRAW	DATE	SCALE	Fit	PART NO.
01	2022/06/06	NEW	Dean.Lin	x.	±0.60	2022/06/06	UNIT	mm [inch]	WF2508-2WSHXXXXX1
				x.X	±0.40	DATE	SIZE	A4	TITLE:
				x.XX	±0.25	DATE	SHEET	2/2	2.5*2.5mm Wafer Dual Rows, 180°DIP, KINK
				Angle	± 3°	DATE	PROJ.	Customer NO.	
				DIM	TOL				

WCON

Http: www.wcon.com

WCON-Dongguan Tel: +86 769 85358920
WCON-Kunshan Tel: +86 512 57468408
Fax: +86 769 85358915
E-mail: sales@wcon.com
Fax: +86 512 57468468
E-mail: salesks@wcon.com