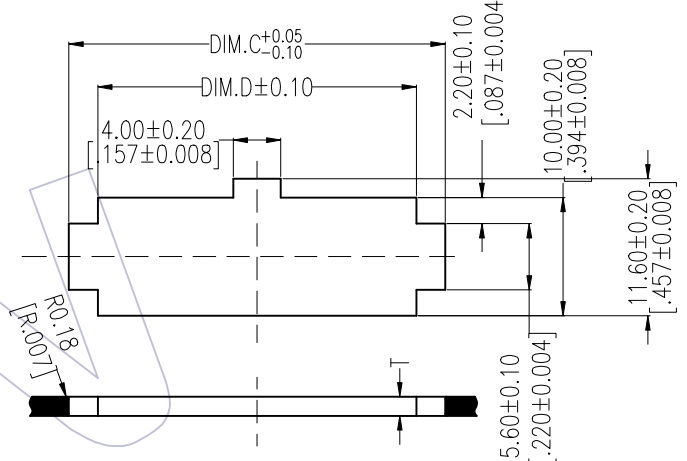
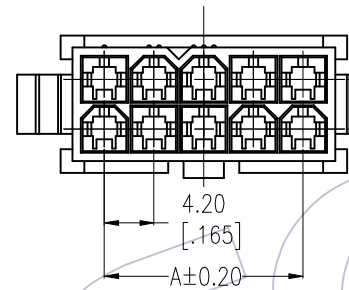


HSF

NOTES:
 Rated Current:9.0A
 Contact Resistance:20mΩ max
 Withstand Voltage:1500V AC/Minute
 Insulation Resistance:1000MΩ min
 Operation Temperature:-25℃ to+85℃
 Insulator Material:PA66
 Used with:WF4202-MT(Male Terminal)

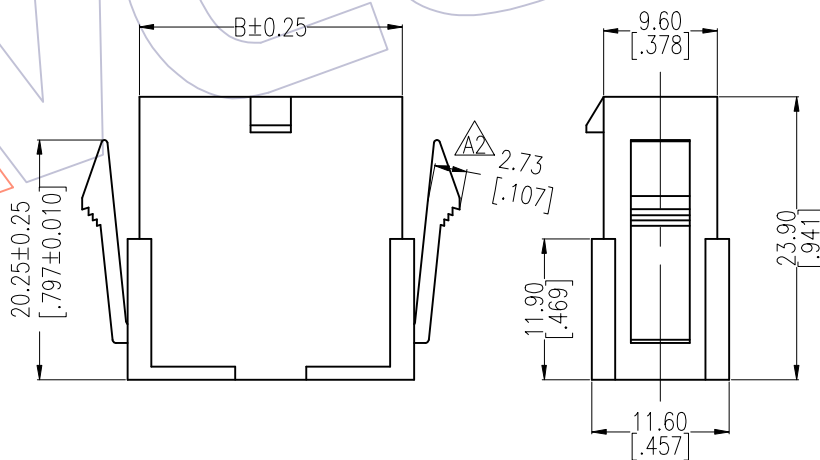
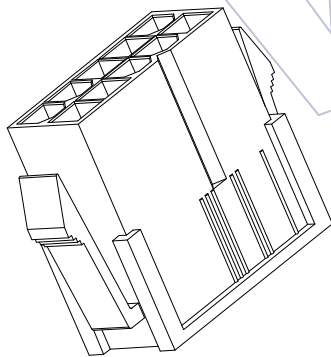
RECOMMENDED PANEL HOLE DIMENSIONS
 (THICKNESS:0.8-2.0/.032-.079)



Ordering Information

WF4202 -2 H K XX W 0 1

No. of Row Dual Row
 No. of pins 01P~12P
 Color W=White B=Black
 Packing 0=PE Bag



Dimensional & Ordering Information

Circuit	Part No.	Dimension			
		A	B	C	D
2x01	WF4202-2HK01W01	---	5.40	10.80	5.80
2x02	WF4202-2HK02W01	4.20	9.60	15.00	10.00
2x03	WF4202-2HK03W01	8.40	13.80	19.20	14.20
2x04	WF4202-2HK04W01	12.60	18.00	23.40	18.40
2x05	WF4202-2HK05W01	16.80	22.20	27.60	22.60
2x06	WF4202-2HK06W01	21.00	26.40	31.80	26.80
2x07	WF4202-2HK07W01	25.20	30.60	36.00	31.10
2x08	WF4202-2HK08W01	29.40	34.80	40.20	35.30
2x09	WF4202-2HK09W01	33.60	39.00	44.40	39.50
2x10	WF4202-2HK10W01	37.80	43.20	48.60	43.70
2x11	WF4202-2HK11W01	42.00	47.40	52.80	47.90
2x12	WF4202-2HK12W01	46.20	51.60	57.00	52.10

REV	DATE	MODIFICATION DESCRIPTION	CHANGE	OPERATION	DRAW PAN	DATE	SCALE	FIT	PART NO.
A2	2021/12/10	Add Panel Cutouts	PAN	x.X ±0.40	PAN	2021/12/10	UNIT	mm	SEE TAB
A1	2020/09/11	Add Drawing	Du Ying	x.XX ±0.25	CHECK	DATE	SIZE	A4	TITLE: 4.20 HOUSING DUAL ROW 弹片式卡钩
AO	2012/09/17	NEW	JYHuang	x.XXX ±0.15	APPROVE	DATE	SHEET	1/2	Customer NO.
				Angle ± 3'			PROJ.		
				DIM TOL					

WCON

Http: www.wcon.com
 WCON-Dongguan Tel: +86 769 85358920
 WCON-Kunshan Tel: +86 512 57468408
 Fax: +86 769 85358915
 Fax: +86 512 57468468
 E-mail: sales@wcon.com
 E-mail: sales@wcon.com