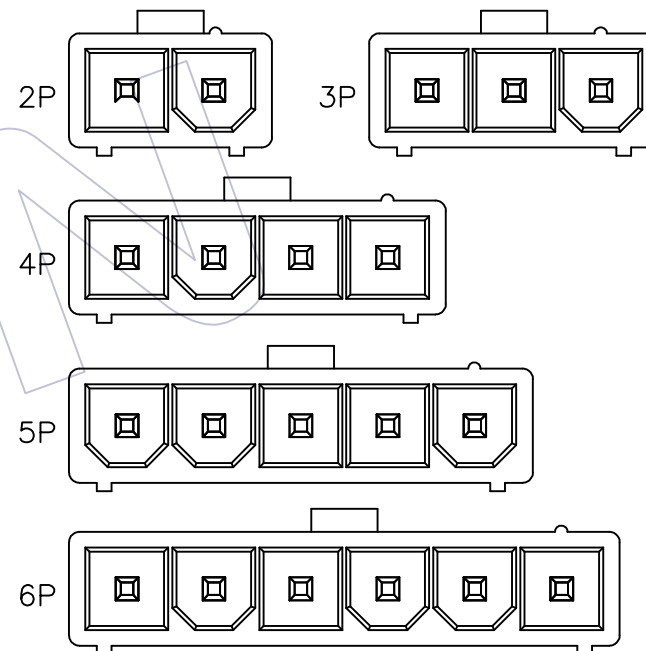
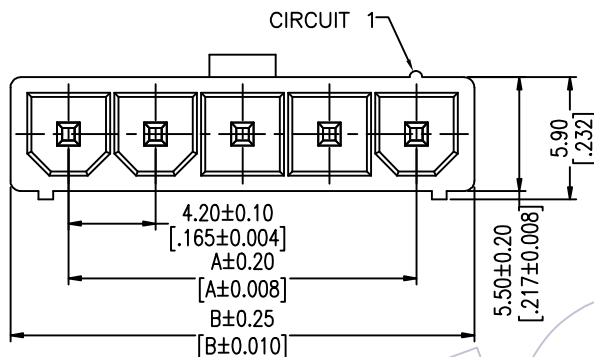
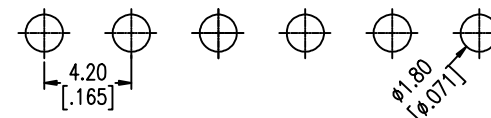


HSF

NOTES:
 Rated Current:9.0A
 Contact Resistance:30mΩ max
 Rated Voltage:600V
 Withstand Voltage:1000V AC/Minute
 Insulation Resistance:1000MΩ min
 Operation Temperature:-25℃ to+85℃

Contact Material:Brass
 Contact Plating:Au Or Sn over Ni
 Insulator Material:PA66 UL94V-0

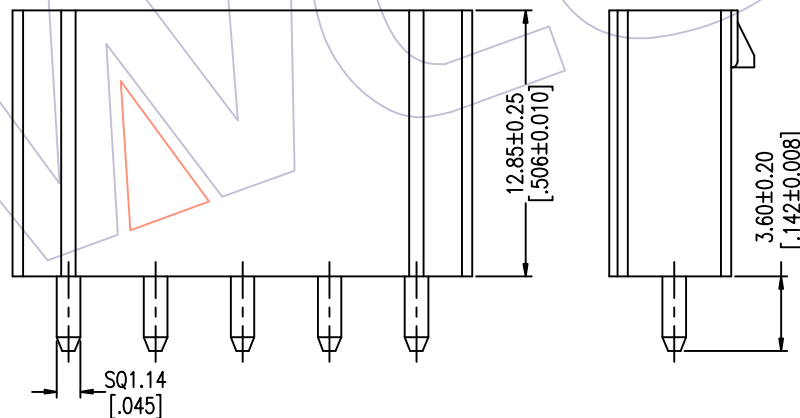
Recommended P.C.B Layout(Top Side)
 (PCB BOARD TOLERANCE±0.05)



Ordering Information

WF4202 -1 WS XX W 0 1

- No. of Row Single Row
- No. of pins 02-05P
- Contact Plating S0=Gold Flash/Tin, S3=10u"Gold/Tin, S4=15u"Gold/Tin, S5=30u"Gold/Tin, G0=Gold Flash, G3=10u"Gold, G4=15u"Gold, G5=30u"Gold, Blank=Tin
- Color B=Black, W=White, T=Natural(白色透明)
- Packing 0=PE Bag



Specification & Ordering Information:

Circuit	Part No.	Dimension	
		A	B Δ
02	WF4202-1WS02W01	4.20	9.80
03	WF4202-1WS03W01	8.40	14.00
04	WF4202-1WS04W01	12.60	18.20
05	WF4202-1WS05W01	16.80	22.40
06	WF4202-1WS06W01	21.00	26.60

				OPERATION		DRAW Ding	DATE 2017/02/09	SCALE FIT	PART NO. SEE TAB	 Http: www.wcon.com WCON-Dongguan Tel: +86 769 85358920 WCON-Kunshan Tel: +86 512 57468408 Fax: +86 769 85358915 E-mail: sales@wcon.com	
A1	23/05/05	依实物修改图面	Δ	x.X	±0.40						
AO	2012/09/17	NEW	—	x.XX	±0.25	APPROVE	DATE	SHEET 1/1	Customer NO.		
REV	DATE	MODIFICATION DESCRIPTION	CHANGE	x.XXX	±0.15					Angle ± 3'	DIM TOL