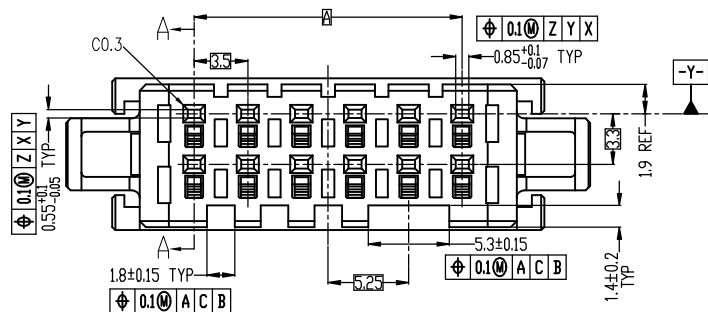


# HSF

**NOTES:**

- 1.Voltage Rating: 250V AC/DC;
- 2.Withstand Voltage: 1500V AC;
- 3.Insulation Resistance: 1000MΩ Min;
- 4.Operating Temperature: -40°C to +125°C;
- 5.Insulator Material: PBT,G.F,UL94V-0,BK;

Matching parts	
Housing	Wiring terminal
WD3500-2HXXX0XX	WD3500-TPXXSN01 WD3500-3TPXXS401 XX: 18~30Awg

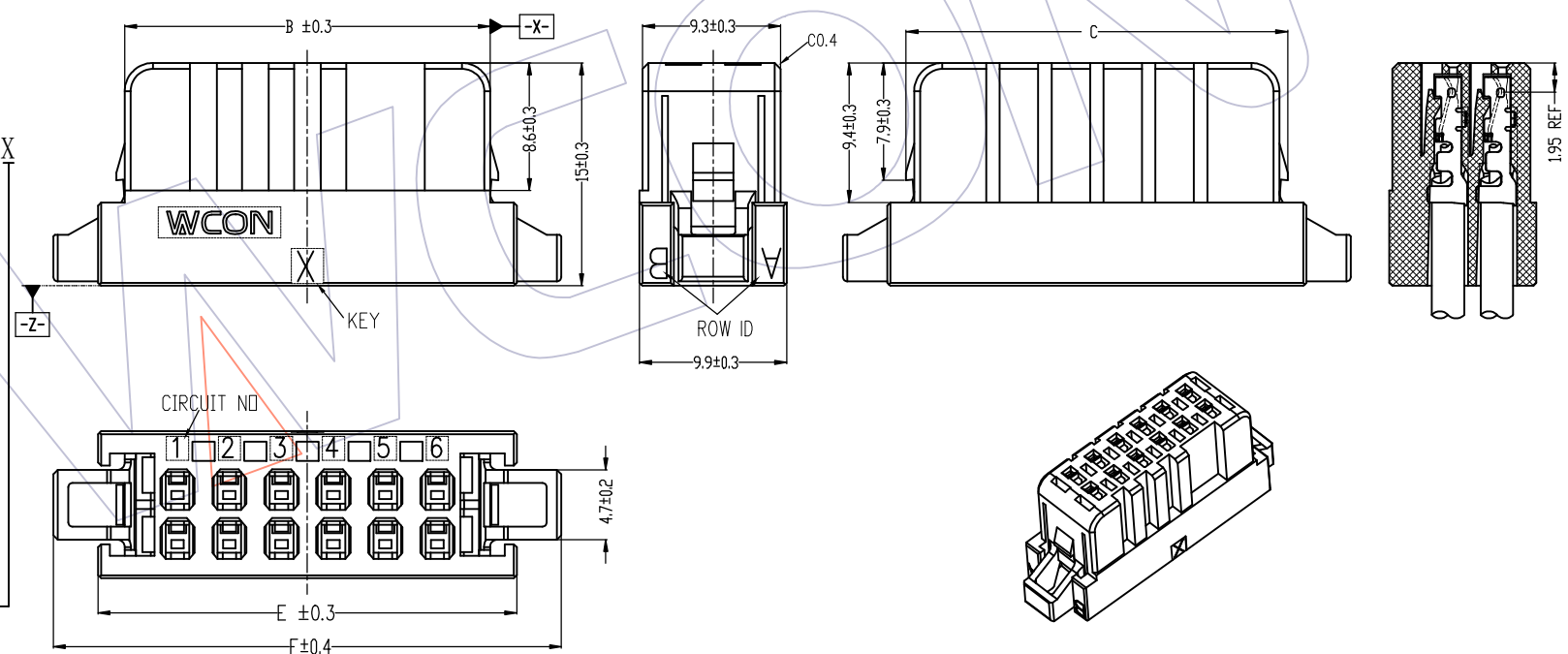


PART NO	Color	PIN	A	B	C	E	F	G
WD3500-2H04B001(W)	Black	8	10.5	17.6	18.7	21.2	27.2	1.75
WD3500-2H04Y001(W)	Yellow							
WD3500-2H06B001(W)	Black	12	14.5	24.6	25.7	28.2	34.2	5.25
WD3500-2H06W001(W)	Natural							
WD3500-2H06Y001(W)	Yellow							
WD3500-2H06B011(W)	Black	12	14.5	24.6	25.7	28.2	34.2	5.25
WD3500-2H08B001(W)	Black	16	24.5	31.6	32.7	35.2	41.2	8.75
WD3500-2H11B001(W)	Black	22	35.0	42.1	43.2	45.7	51.7	14.0
WD3500-2H11W001(W)	Natural							
WD3500-2H11Y001(W)	Yellow							
WD3500-2H15B001(W)	Black	30	49.0	56.1	57.2	59.7	65.7	21.0
WD3500-2H19B001(W)	Black	38	63.0	70.1	71.2	73.7	79.7	28.0

**Ordering Information**

WD3500-2 H XX X 0 X 1 X

- 2=Dual Row
- H=HOUSING
- No.of Pins of single row:  
04=4P; 06=6P  
08=8P; 11=11P  
15=15P; 19=19P
- Color:  
B=Black; Y=Yellow;  
W=Natural;
- PACKING: PE Bag
- 0=Conventional TYPE  
1=Band column TYPE
- CODE OF KEYING  
01=X;
- Wcon Logo:  
W: Whit LOGO  
Blank: without log



REV	DATE	MODIFICATION DESCRIPTION	CHANGE	OPERATION		DRAW kevin-xin	DATE 2023.08.02	SCALE UNIT	FIT mm	PART NO. WD3500-2HXXX0X1(W)
				x.x	±0.40					
AO	2023.08.02	Add the cable terminal material number		x.xx	±0.25	CHECK	DATE	SIZE	A4	TITLE: 3.5X3.3mm DYN TYPE Dual Row Socket Housing
1	2021.09.25	NEW		x.xxx	±0.15	APPROVE	DATE	SHEET	1/2	Customer NO.
				Angle	± 3°			PROJ.		

**WCON**  
Http: www.wcon.com

WCON-Dongguan Tel: +86 769 85358920 Fax: +86 769 85358915 E-mail: sales@wcon.com	WCON-Kunshan Tel: +86 512 57468408 Fax: +86 512 57468468 E-mail: salesks@wcon.com
---	--