

HSF

28PIN, X-KEY

NOTES:

- 1.Voltage Rating:125V AC/DC;
- 2.Withstand Voltage: 1000V AC;
- 3.Insulation Resistance: 100MΩ Min;
- 4.Operating Temperature: -40°C to +125°C;
- 5.Insulator Material: PBT,G.F,UL94V-O,BK;

Matching parts	
Housing	Wiring terminal
WD2000-2HGXXX0XX	WD3500-MTP28XX01

Ordering Information

WD2000-2 HG XX X O X X

2=Dual Row

H=HOUSING

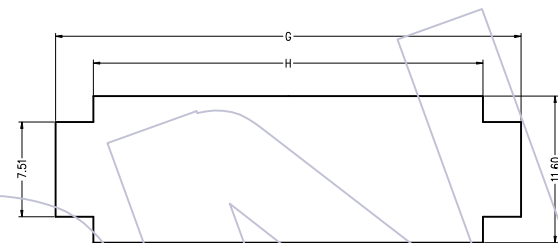
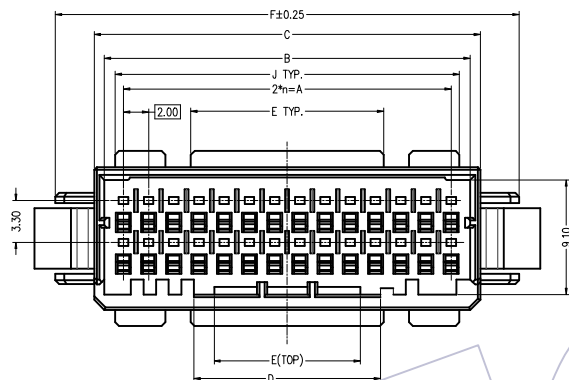
No. of Pins of single row:
05=5P; 11=11P;13=13P;
14=14P;16=16P;17=17P;
20=20P;

Color:
B=Black; Y=Yellow;
W=Natural; R=Red

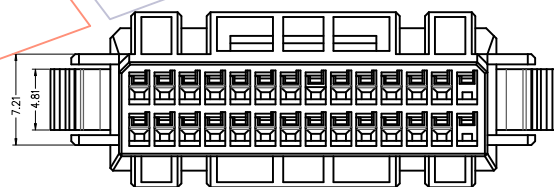
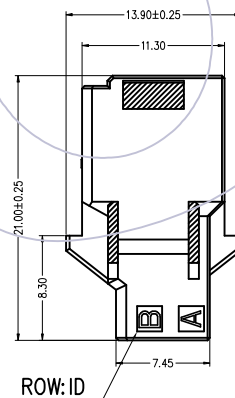
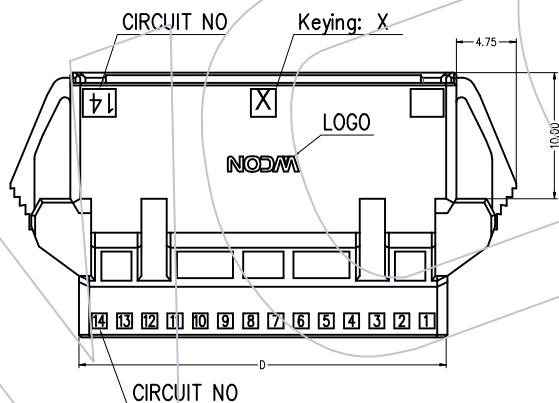
PACKING:PE Bag

01= X Fool-proofing
02= Y Fool-proofing



W: With logo
blank:without logo



RECOMMENDED PANEL LAYOUT
(APPLICABLE PANEL THICKNESS: 0.8,1.0,1.6,2.0)



P/N	PIN	KEY	n	A	B	C	D	E	F	G	H	J
WD2000-2HG05B001X	10	X	4	See Page 4								
WD2000-2HG20B001X	40	X	19	38.00	41.00	42.60	41.20	21.30	48.78	48.9	42.9	39.3
WD2000-2HG17B001X	34	X	16	32.00	35.00	36.60	35.20	18.30	42.78	42.9	36.9	33.3
WD2000-2HG16B001X	32	X	15	30.00	33.00	34.60	33.20	17.30	40.78	40.9	34.9	31.3
WD2000-2HG14B001X	28	X	13	26.00	29.00	30.60	29.20	15.30	36.78	36.9	30.9	27.3
WD2000-2HG13B001X	26	X	12	24.00	27.00	28.60	27.20	14.30	34.78	34.9	28.9	35.3
WD2000-2HG11B001X	22	X	10	20.00	23.00	24.60	23.20	11.30	30.78	30.9	24.9	21.3

REV	DATE	MODIFICATION DESCRIPTION	CHANGE	OPERATION		DRAW kevin-xin	DATE 2023.08.02	SCALE	FIT	PART NO. WD2000-2HGXXX0X (W)	 Http: www.wcon.com	
				X.X	±0.40							
A1	2023.08.02	Add the cable terminal material number		X.XX	±0.25	CHECK	DATE	UNIT	mm	TITLE:	2. 0X3. 3mm Dyn. TYPE	
AO	2022.05.20	NEW		X.XXX	±0.15	APPROVE	DATE	SIZE	A4	Dual Row Panel Housing		
				Angle	± 3°			SHEET	1/4	Customer NO.		
				DIM	TOL			PROJ.		Tel: +86 769 85358920		Tel: +86 512 57468408
										Fax: +86 769 85358915		Fax: +86 512 57468468
										E-mail: sales@wcon.com		E-mail: salesks@wcon.com