

# HSF

Recommended P.C.B Layout(Top Side)  
(PCB BOARD TOLERANCE±0.05)

NOTES:  
 Current Rating: 3.0AMP  
 Contact Resistance: 20mΩ Max  
 Withstand Voltage: 1000V AC/DC  $\Delta 2$   
 Insulation Resistance: 1000MΩ Min  
 Operation Temperature: -40°C to +105°C

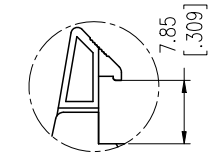
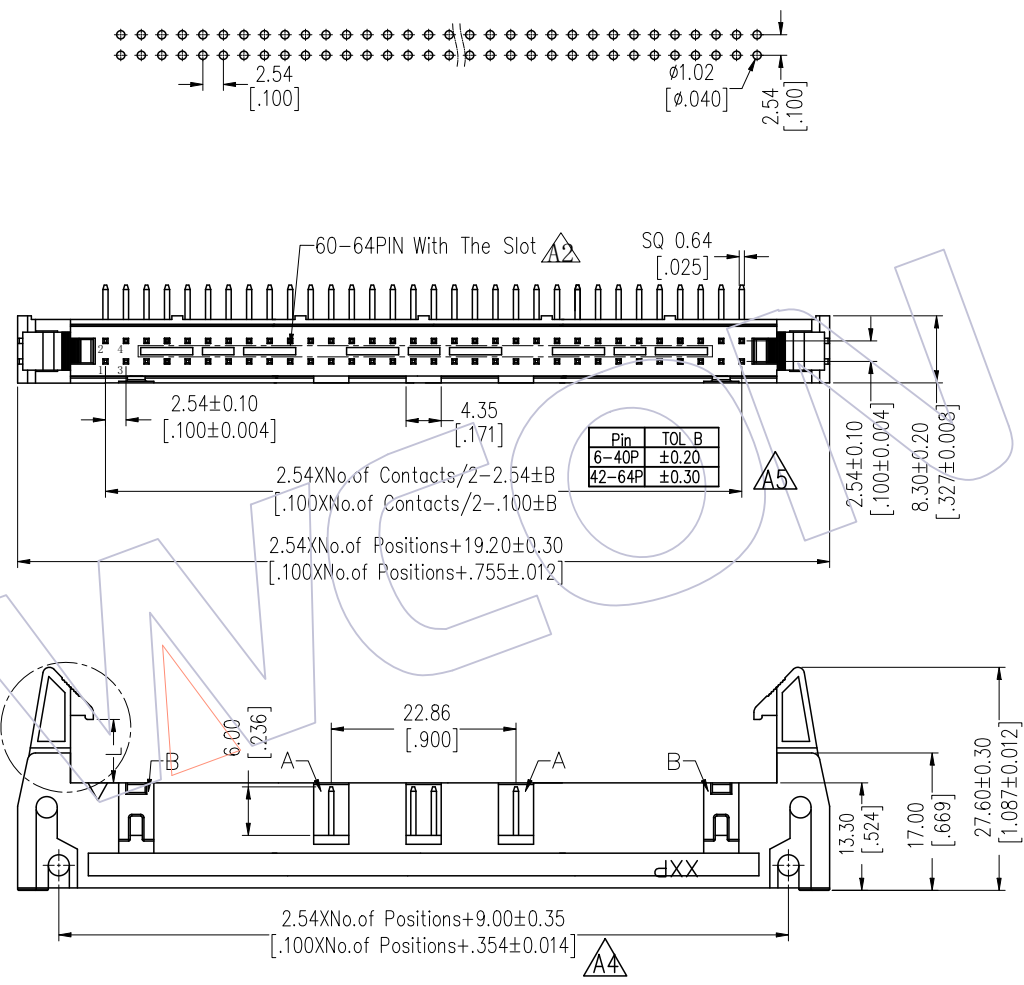
Contact Material: Brass  $\Delta 1$   
 Contact plating: Au Or Sn over Ni  
 Insulator Material: PA9T Or PBT+30%G.F UL94V-0

06P-18P Without Slot "A" and "B"  
 20P-58P Without Slot "A", With Slot "B"  
 60P-64P With Slot "A" and "B"

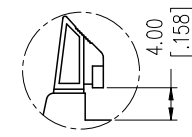
## Ordering Information

3210 - XX R XX X X X 1

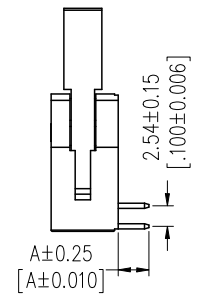
No. of Pins	Contact Plating	Insulator Color	Latch Type	Packing
06 24	G0=Gold Flash	B=Black	L=Long Latch	A=Tray
08 26	G3=10u"Gold	G=Grey(427C)	S=Short Latch	T=Tube
10 30	G4=15u"Gold		N=Without Latch	
12 34	G5=30u"Gold			
14 40	S0=Gold Flash/Tin			
16 50	S3=10u"Gold/Tin			
18 60	S4=15u"Gold/Tin			
20 64	S5=30u"Gold/Tin			
	SN=Tin			



Long Latch



Short Latch



Item	Pitch	Mating
Standard	2.54	5211
Alternate		

Item	DIM.A
Standard	3.80
Alternate	----

A5	2022/01/12	MODIFY: 2.54XNo. of Contacts/2-2.54±B $\Delta 5$	Du Ying	OPERATION	DRAW	DATE	SCALE	FIT	PART NO.
A4	2019/01/04	MODIFY $\Delta 4$	Ding	x.x ± 0.40	Du Ying	2022/01/12	UNIT	mm	3210-XXRXXXXX1
A3	2014/12/03	MODIFY $\Delta 3$	-----	x.xx ± 0.25	CHECK	DATE	SIZE	A4	TITLE:
A0	2012/10/08	NEW	-----	x.xxx ± 0.15	APPROVE	DATE	SHEET	1/1	2.54 EJECTOR HEADER 90° DIP
REV	DATE	MODIFICATION DESCRIPTION	CHANGE	Angle ± 3°	APPROVE	DATE	PROJ.		Customer NO.
				DIM TOL					

**WCON**  
 Http: www.wcon.com  
 WCON-Dongguan Tel: +86 769 85358920  
 WCON-Kunshan Tel: +86 512 57468408  
 Fax: +86 769 85358915 Fax: +86 512 57468468  
 E-mail: sales@wcon.com E-mail: salesks@wcon.com