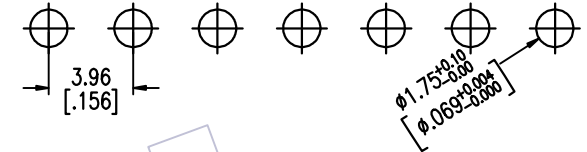


# HSF

NOTES:  
 Current Rating: 7.0AMP  
 Contact Resistance: 20mΩ Max  
 Withstand Voltage: 1500V AC/DC  
 Insulation Resistance: 1000MΩ Min  
 Operation Temperature: -40°C to +105°C

Contact Material: Brass  
 Contact plating: Au Or Sn over Ni  
 Insulator Material: PA66 UL94V-2

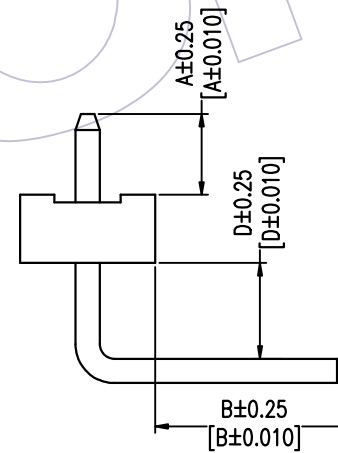
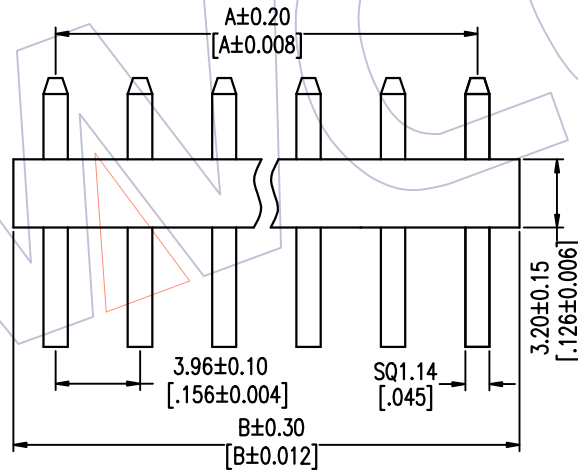
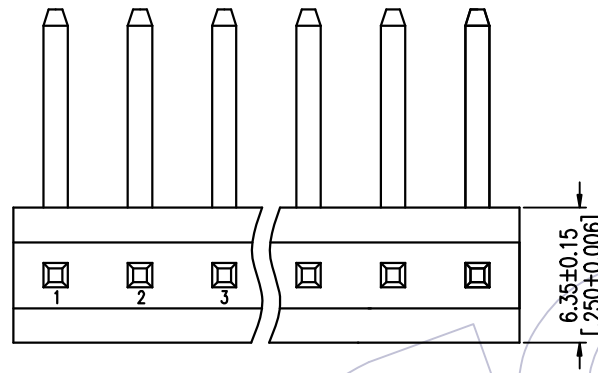
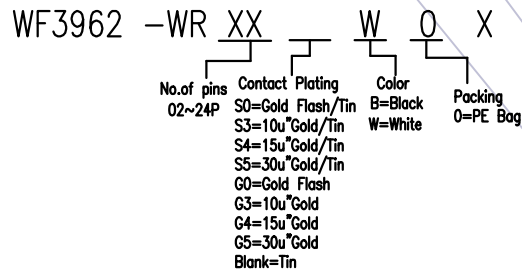
Recommended P.C.B Layout(Top Side)  
 (PCB BOARD TOLERANCE ±0.05)



Dimensional & Ordering Information:

Circuit	Part No.	Dimension	
		A	B
02	WF3962-WR02WOX	3.96	7.92
03	WF3962-WR03WOX	7.92	11.88
04	WF3962-WR04WOX	11.88	15.84
05	WF3962-WR05WOX	15.84	19.80
06	WF3962-WR06WOX	19.80	23.76
07	WF3962-WR07WOX	23.76	27.72
08	WF3962-WR08WOX	27.72	31.68
09	WF3962-WR09WOX	31.68	35.64
10	WF3962-WR10WOX	35.64	39.60
11	WF3962-WR11WOX	39.60	43.56
12	WF3962-WR12WOX	43.56	47.52
13	WF3962-WR13WOX	47.52	51.48
14	WF3962-WR14WOX	51.48	55.44
15	WF3962-WR15WOX	55.44	59.40
16	WF3962-WR16WOX	59.40	63.36
17	WF3962-WR17WOX	63.36	67.32
18	WF3962-WR18WOX	67.32	71.28
19	WF3962-WR19WOX	71.28	75.24
20	WF3962-WR20WOX	75.24	79.20
21	WF3962-WR21WOX	79.20	83.16
22	WF3962-WR22WOX	83.16	87.12
23	WF3962-WR23WOX	87.12	91.08
24	WF3962-WR24WOX	91.08	95.04

## Ordering Information



ITEM	A	D	B
Standard	3.80	4.50	9.30
Alternate			

REV	DATE	MODIFICATION DESCRIPTION	CHANGE	OPERATION	DRAW	DATE	SCALE	FIT	PART NO.
A2	2016/09/01	94V-0 → 94V-2	⚠	X.X ±0.40	Surong Xu	2016/09/01	UNIT	mm	SEE TAB
A1	2015/05/13	Phosphor Bronze--Brass	⚠	X.XX ±0.25	CHECK	DATE	SIZE	A4	TITLE: 3.96 WAFER 90°
A0	2012/09/15	NEW	---	X.XXX ±0.15	APPROVE	DATE	SHEET	1/1	Customer NO.
				Angle ± 3°			PROJ.		
				DIM TOL					

**WCON**  
 Http: www.wcon.com

WCON--Dongguan  
 Tel: +86 769 85358920  
 Fax: +86 769 85358915  
 E-mail: sales@wcon.com

WCON--Kunshan  
 Tel: +86 512 57468408  
 Fax: +86 512 57468468  
 E-mail: salesks@wcon.com