

HSF

TECHNICAL SPECS:

Current Rating: 3.0AMP
 Contact Resistance: 10mΩ Max
 Dielectric Strength: Min 1000VRMS
 Mechanical Life: Min 500 cycles
 Mating Pin: $\phi 0.40$ to $\phi 0.56$ mm
 Forces: (polished steel gauge $\phi 0.47$ mm)
 Insertion: 200g Max/Pin, Withdrawal: 60g Min/Pin
 Operation Temperature: -40°C to $+105^{\circ}\text{C}$

Sleeve: Brass CuZn36Pb3(C36000)
 Contact Clip(4 finger): BeCu(C17200)
 Insulator Material: PPS+30%G.F(UL94V-0)

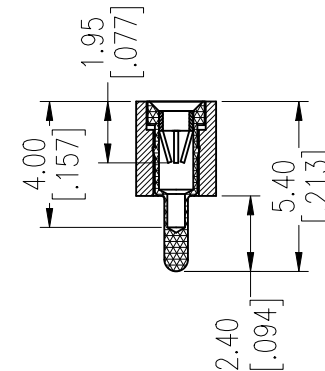
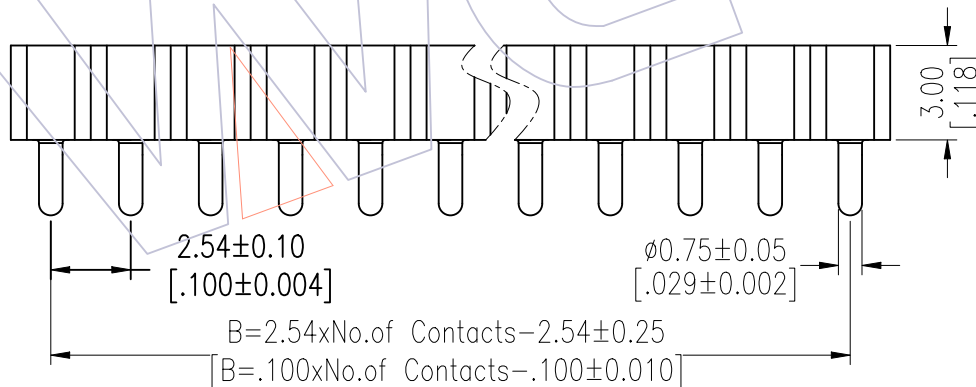
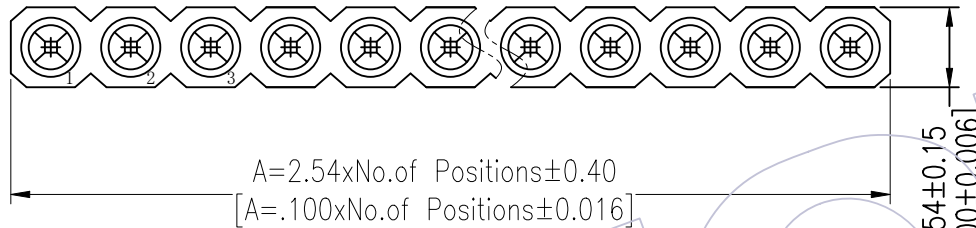
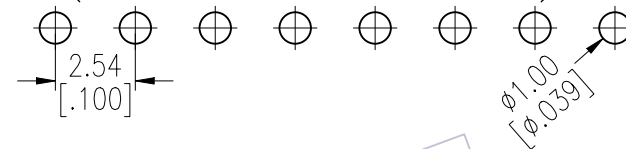
Ordering Information

3520-301 XX S XX 054 X 1

No. of Pin 2~50PIN	Contact Plating S0=Gold Flash/Tin S3=10u"Gold/Tin S4=15u"Gold/Tin S5=30u"Gold/Tin SN=Tin	Packing A=Tray T=Tube
-----------------------	---	-----------------------------

Item	Pitch	Mating
Standard	2.54	3510
Alternate		

Recommended P.C.B Layout(Top Side)
 (PCB BOARD TOLERANCE ± 0.05)



OPERATION	DRAW	DATE	SCALE	FIT	PART NO.
x.x ± 0.40	JYHuang	2012/10/18	UNIT mm		3520-301XXSXX054X1
x.xx ± 0.25	CHECK	DATE	SIZE A4		TITLE: 2.54mm MACHINED FEMALE HEADER SINGLE ROW 180° H=3.00 L=5.4
x.xxx ± 0.15	APPROVE	DATE	SHEET 1/1		Customer NO.
Angle ± 3'			PROJ.		
DIM TOL					

WCON

Http: www.wcon.com

WCON-Dongguan	WCON-Kunshan
Tel: +86 769 85358920	Tel: +86 512 57468408
Fax: +86 769 85358915	Fax: +86 512 57468468
E-mail: sales@wcon.com	E-mail: salesks@wcon.com