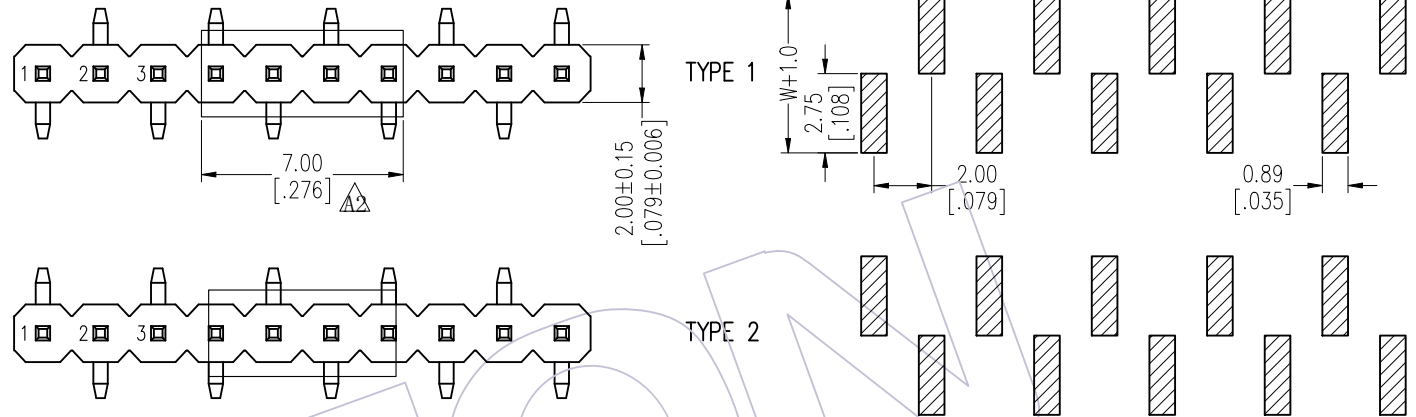


NOTES:
 Rated Current: 2.0AMP.
 Contact Resistance: 20mΩ Max.
 Withstand Voltage: 500V AC/DC
 Insulation Resistance: 1000MΩ Min.
 Operation Temperature: -40°C to +125°C(GOLD)
 -40°C to +105°C(TIN) Δ

Contact Material: Brass
 Contact Plating: Au or Sn Over Ni
 Insulator Material: PA9T+33%G.F UL94V-0 BK

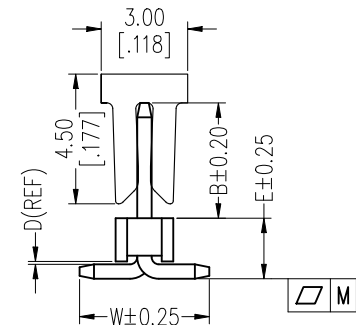
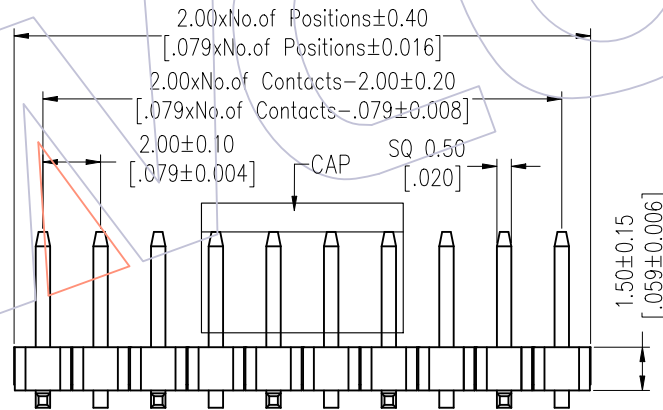
Recommended P.C.B Layout (Top Side)
 (PCB BOARD TOLERANCE ± 0.05)



Ordering Information

1215-11 XX XX M XXX C R XX Δ

No. of Pins	Contact Plating	Pin Length	Insulator Material	Packing	Series No.
02-40	G0=Gold Flash	L=B+D+1.5+ $\frac{W}{2}$	T=Tube		01-99
	G3=10u"Gold	Standard:058=5.8	C=PA9T	P=Tube+CAP	
	G4=15u"Gold	068=6.8		R=Tape&Reel+CAP	
	G5=30u"Gold	078=7.8			
	S0=Gold Flash/Tin				
	S3=10u"Gold/Tin				
	S4=15u"Gold/Tin				
	S5=30u"Gold/Tin				
	SN=Tin				
	SM=Matte Tin				



Item	Pin Length	W	E	B	Mating
Standard	5.80	4.50	2.10	2.00	2220T 2221 2227T 2228
	6.80	4.50	2.10	3.00	2235
	7.80	4.50	2.10	4.00	2240 2243 2263 2272
Alternate					

TITLE	PART NO.	SPEC. Δ
PIN	2-15P	16-25P
M	0.10	0.15
	26-40P	
TYPE 1	1215-11XXXXMXXXXC01	DUAL/ODD PINS
TYPE 2	1215-11XXXXMXXXXC02	DUAL PINS

OPERATION	DRAW	DATE	SCALE	Fit	PART NO.
A2	2019/07/20	Modify the CAP	Δ	x.X ±0.40	1215-11XXXXMXXXXCXXX
A1	2018/01/18	Modify P/N	Δ	x.XX ±0.25	TITLE:
A0	2012/04/18	NEW	-----	x.XXX ±0.15	PH2.00 SINGLE ROW SMT H=1.5
REV	DATE	MODIFICATION DESCRIPTION	CHANGE	Angle ± 3°	APPROVE
				DIM TOL	DATE

WCON
 Http: www.wcon.com
 WCON-Dongguan Tel: +86 769 85358920
 WCON-Kunshan Tel: +86 512 57468408
 Fax: +86 769 85358915 Fax: +86 512 57468468
 E-mail: sales@wcon.com E-mail: salesks@wcon.com