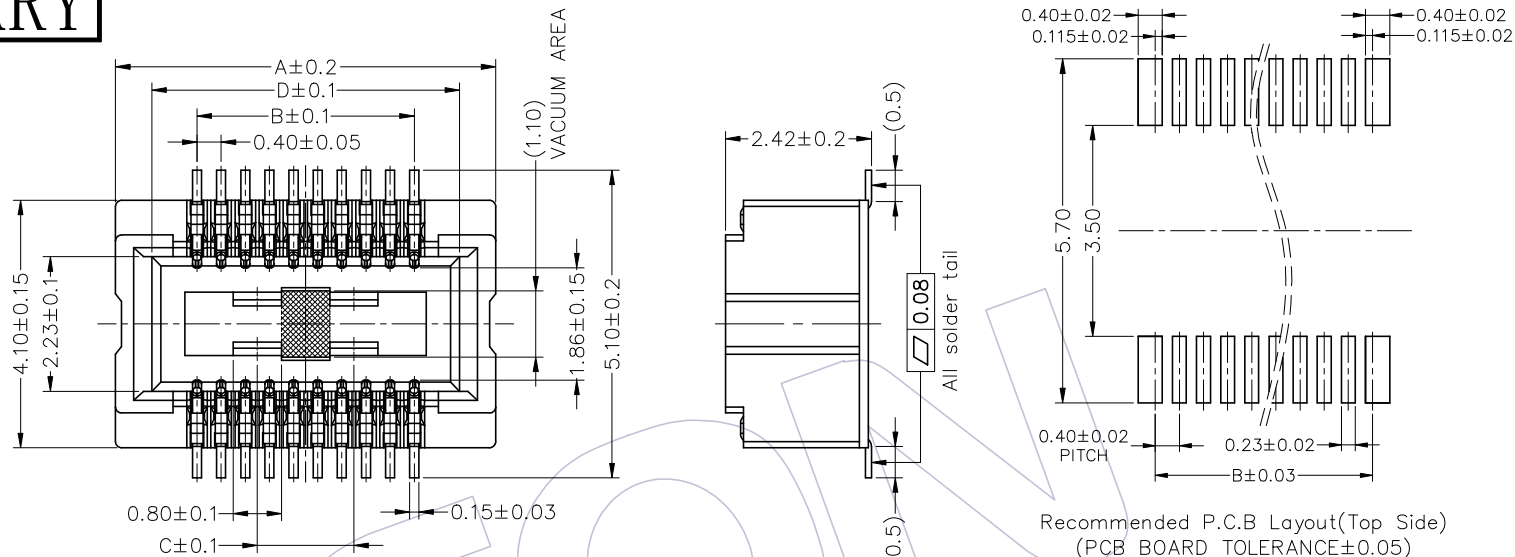


# HSF PRELIMINARY

NOTE:  
 Rated Current: 0.3A  
 Rated Voltage: 30V AC/DC.  
 Contact Resistance: 70mΩ Max  
 Withstanding Voltage: 150V AC.  
 Insulation Resistance: 1000MΩ Min(initial)  
 Temperature Range: -55°C ~ +85°C  
 IR soldering Peak Temperature: 260±5°C, 5S

Contact Material: Copper Alloy  
 Contact Plating:  
 xxu" Gold on contact area(See ordering information), 50u" Nickel underplating Overall  
 Insulator Material: LCP, G.F, UL94 V-0, BK



Recommended P.C.B Layout(Top Side)  
 (PCB BOARD TOLERANCE±0.05)

## Ordering Information

3631- S XXX - 024 M XX R 01

S=Socket

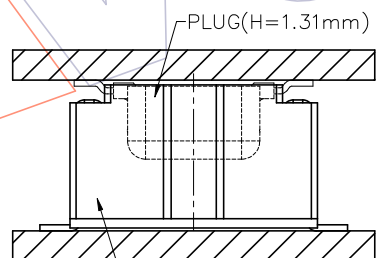
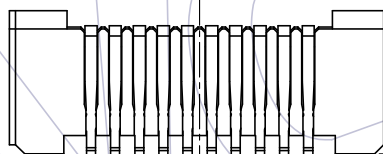
No. of pins  
 020=20Pin; 024=24Pin;  
 030=30Pin; 040=40Pin;  
 050=50Pin; 060=60Pin;  
 070=70Pin; 080=80Pin;

Socket High:  
 024=2.42mm

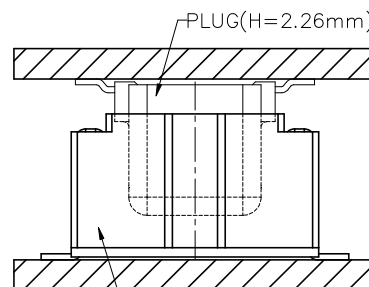
M=SMT

Contact plating:  
 G1=3u" GOLD  
 G4=15u" GOLD

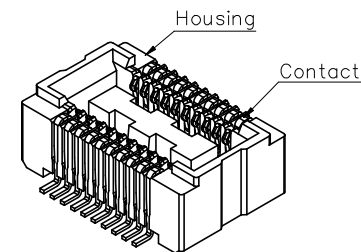
Packing:  
 R=Tape & Reel



MATING VIEW



MATING VIEW



PIN	A	B	C	D
20	6.30	3.60	1.60	5.10
24	7.10	4.40	2.40	5.90
30	8.30	5.60	3.60	7.10
40	10.30	7.60	5.60	9.10
50	12.30	9.60	7.60	11.10
60	14.30	11.60	9.60	13.10
70	16.30	13.60	11.60	15.10
80	18.30	15.60	13.60	17.10

REV	DATE	MODIFICATION DESCRIPTION	CHANGE	OPERATION		DRAW	DATE	SCALE	FIT	PART NO.
				X.X	±0.40					
				X.XX	±0.25	XueLei	2022/12/21	UNIT	mm	3631-SXXX-024MXXR01
				X.XXX	±0.15	CHECK	DATE	SIZE	A4	TITLE:
				Angle	± 3'	APPROVE	DATE	SHEET	1/1	0.40mm BTB, N Type, Female, SMT Type, H=2.42mm
				DIM	TOL			PROJ.	Customer NO.	

**WCON**  
 Http: www.wcon.com

WCON-Dongguan Tel: +86 769 85358920 Fax: +86 769 85358915 E-mail: sales@wcon.com  
 WCON-Kunshan Tel: +86 512 57468408 Fax: +86 512 57468468 E-mail: salesks@wcon.com