

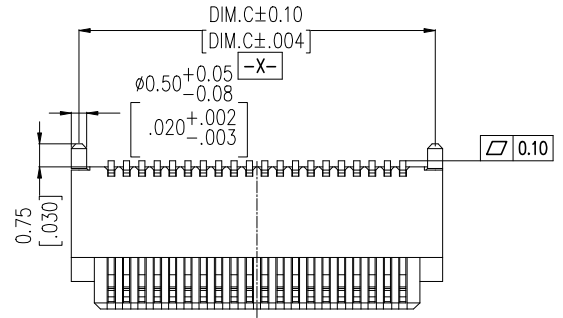
NOTES:
 Current Rating: 0.5AMP
 Voltage Rating: 50V AC/DC
 Contact Resistance: 30mΩ max
 Withstand Voltage: 100V AC for 1minute
 Insulation Resistance: 500MΩ min
 Operation Temperature: -25℃ to +105℃

Housing Material: PA9T(UL94V-0), NATURAL
 Contact Material: Copper alloy
 Fixing Material: Copper alloy
 Contact plating: Au over Ni

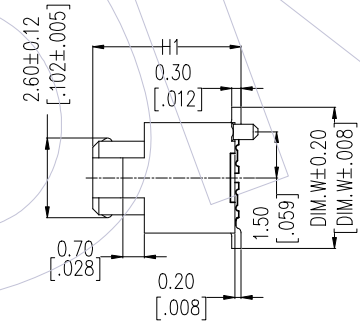
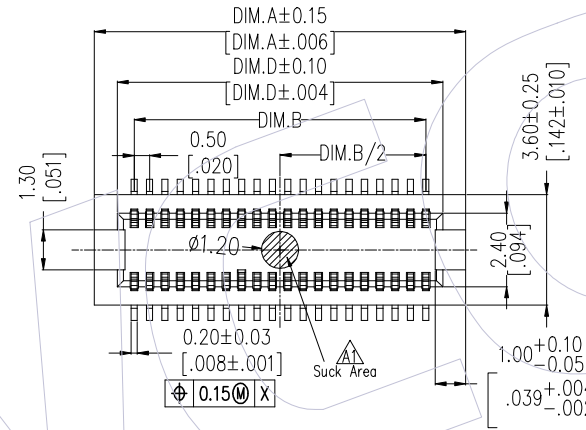
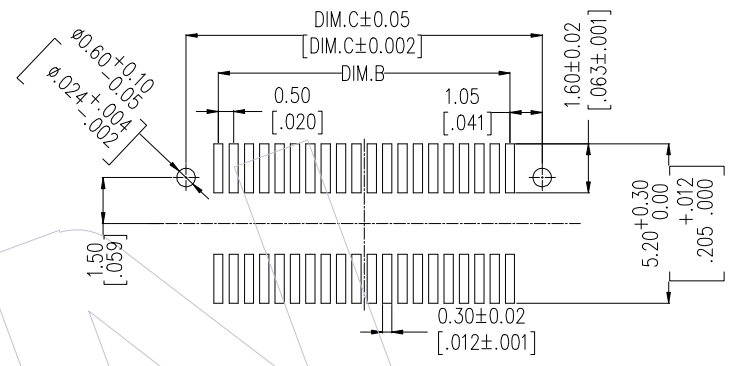
Ordering Information

3622-S XXX - XXX XX X 01

| | | | |
|-------------|--------------|---|---|
| No. of Pins | Housing High | Contact Plating | T=Tube P=Tube+CAP R=Tape&Reel+CAP |
| 14P 50P | 022=2.20 | G1=3u"Gold | |
| 20P 60P | 027=2.70 | G3=10u"Gold | |
| 24P 70P | 048=4.80 | G4=15u"Gold | |
| 30P 80P | | G5=30u"Gold | |
| 32P 90P | | H5=30u"Gold(Contact area, 3u"Gold other area) | |
| 36P 100P | | | |
| 40P | | | |

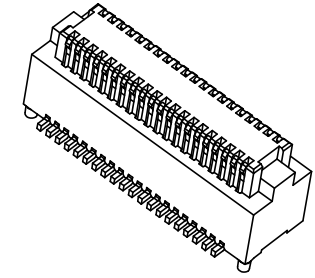
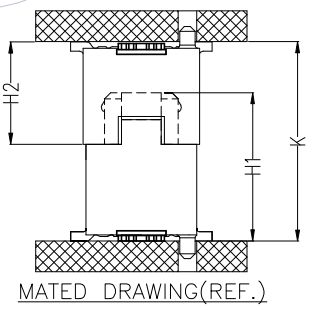
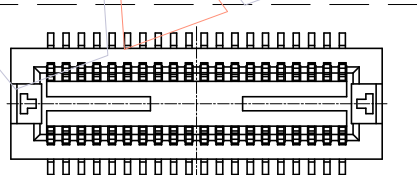


Recommended P.C.B Layout (Top Side)
 (PCB BOARD TOLERANCE±0.05)



| PART NO. | DIM.H1 | DIM.W |
|--------------------|--------|-------|
| 3622-SXXX-022XXX01 | 2.20 | 4.60 |
| 3622-SXXX-027XXX01 | 2.73 | 4.60 |
| 3622-SXXX-048XXX01 | 4.80 | 4.60 |

| ASS'Y HEIGHT(K) | PLUG(H2) | SOCKET(H1) |
|-----------------|----------|------------|
| 3.00 | 2.33 | 2.20 |
| 3.50 | 2.80 | |
| 4.00 | 2.80 | |
| 4.50 | 3.33 | 2.73 |
| 5.00 | 3.83 | |
| 5.50 | 4.33 | |
| 6.00 | 4.83 | 4.80 |
| 6.50 | 3.33 | |
| 7.00 | 3.83 | |
| 7.50 | 4.33 | |
| 8.00 | 4.83 | |



| PIN | DIM.A | DIM.B | DIM.C | DIM.D |
|-----|-------|-------|-------|-------|
| 14 | 5.60 | 3.00 | 5.10 | 4.10 |
| 20 | 7.10 | 4.50 | 6.60 | 5.60 |
| 24 | 8.10 | 5.50 | 7.60 | 6.60 |
| 30 | 9.60 | 7.00 | 9.10 | 8.10 |
| 32 | 10.10 | 7.50 | 9.60 | 8.60 |
| 36 | 11.10 | 8.50 | 10.60 | 9.60 |
| 40 | 12.10 | 9.50 | 11.60 | 10.60 |
| 50 | 14.60 | 12.00 | 14.10 | 13.10 |
| 60 | 17.10 | 14.50 | 16.60 | 15.60 |
| 70 | 19.60 | 17.00 | 19.10 | 18.10 |
| 80 | 22.10 | 19.50 | 21.60 | 20.60 |
| 90 | 24.60 | 22.00 | 24.10 | 23.10 |
| 100 | 27.10 | 24.50 | 26.60 | 25.60 |

| REV | DATE | MODIFICATION DESCRIPTION | CHANGE | OPERATION | DRAW | DATE | SCALE | Fit | PART NO. |
|-----|------------|--------------------------|--------|-------------|---------|------------|-------|-----|---|
| A2 | 2021/07/31 | ADD 70/80/90/100P | XSR | x.x ±0.40 | XSR | 2021/07/31 | UNIT | mm | 3622-SXXX-XXXXXX01 |
| A1 | 2021/05/27 | ADD Suck Area | XSR | x.xx ±0.25 | CHECK | DATE | SIZE | A4 | TITLE: 0.50mm BTB FEMALE SMT TYPE W/O LATCH |
| A0 | 2018/03/09 | NEW | ----- | x.xxx ±0.15 | APPROVE | DATE | SHEET | 1/1 | Customer NO. |
| | | | | Angle ± 3° | | | PROJ. | | |
| | | | | DIM TOL | | | | | |

WCON
 Http: www.wcon.com

WCON-Dongguan Tel: +86 769 85358920 Fax: +86 769 85358915 E-mail: sales@wcon.com

WCON-Kunshan Tel: +86 512 57468408 Fax: +86 512 57468468 E-mail: salesks@wcon.com