

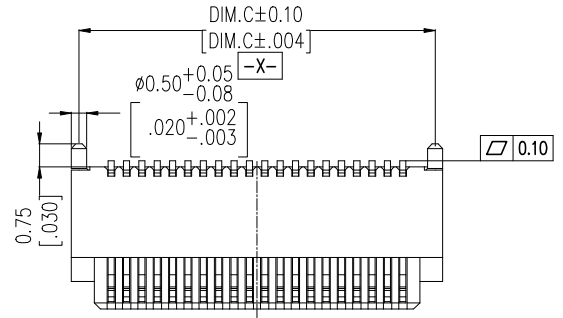
NOTES:
 Current Rating: 0.5AMP
 Voltage Rating: 50V AC/DC
 Contact Resistance: 30mΩ max
 Withstand Voltage: 100V AC for 1minute
 Insulation Resistance: 500MΩ min
 Operation Temperature: -25℃ to +105℃

Housing Material: PA9T(UL94V-0), NATURAL
 Contact Material: Copper alloy
 Fixing Material: Copper alloy
 Contact plating: Au over Ni

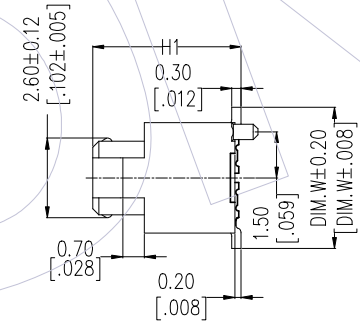
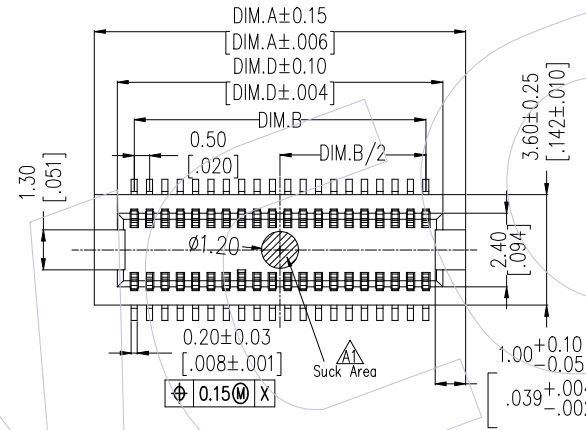
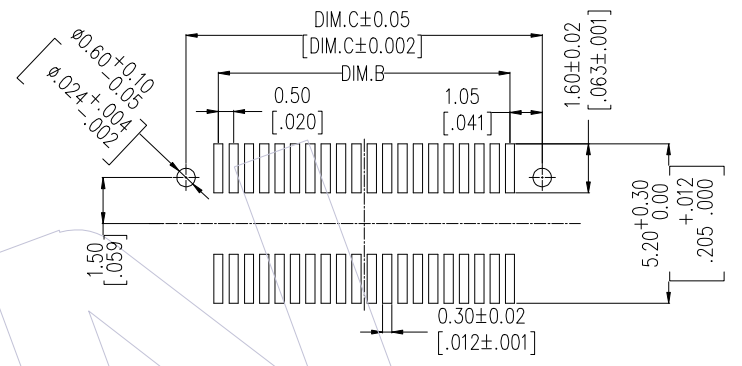
Ordering Information

3622-S XXX - XXX XX X 01

No. of Pins	Housing High	Contact Plating	T=Tube P=Tube+CAP R=Tape&Reel+CAP
14P 50P	022=2.20	G1=3u"Gold	
20P 60P	027=2.70	G3=10u"Gold	
24P 70P	048=4.80	G4=15u"Gold	
30P 80P		G5=30u"Gold	
32P 90P		H5=30u"Gold(Contact area, 3u"Gold other area)	
36P 100P			
40P			

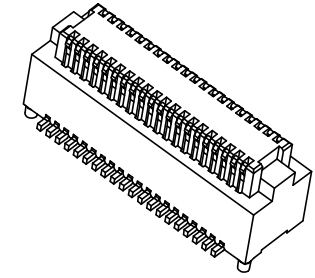
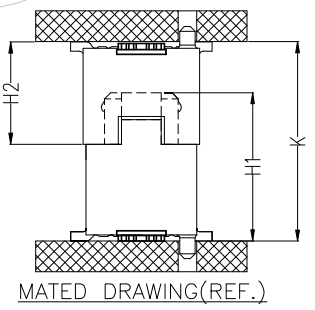
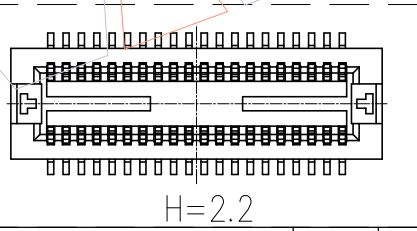


Recommended P.C.B Layout (Top Side)
 (PCB BOARD TOLERANCE±0.05)



PART NO.	DIM.H1	DIM.W
3622-SXXX-022XXX01	2.20	4.60
3622-SXXX-027XXX01	2.73	4.60
3622-SXXX-048XXX01	4.80	4.60

ASS'Y HEIGHT(K)	PLUG(H2)	SOCKET(H1)
3.00	2.33	2.20
3.50	2.80	
4.00	2.80	2.73
4.50	3.33	
5.00	3.83	
5.50	4.33	
6.00	4.83	4.80
6.50	3.33	
7.00	3.83	
7.50	4.33	
8.00	4.83	



PIN	DIM.A	DIM.B	DIM.C	DIM.D
14	5.60	3.00	5.10	4.10
20	7.10	4.50	6.60	5.60
24	8.10	5.50	7.60	6.60
30	9.60	7.00	9.10	8.10
32	10.10	7.50	9.60	8.60
36	11.10	8.50	10.60	9.60
40	12.10	9.50	11.60	10.60
50	14.60	12.00	14.10	13.10
60	17.10	14.50	16.60	15.60
70	19.60	17.00	19.10	18.10
80	22.10	19.50	21.60	20.60
90	24.60	22.00	24.10	23.10
100	27.10	24.50	26.60	25.60

REV	DATE	MODIFICATION DESCRIPTION	CHANGE	OPERATION	DRAW	DATE	SCALE	Fit	PART NO.
A2	2021/07/31	ADD 70/80/90/100P	XSR	x.x ±0.40	XSR	2021/07/31	UNIT	mm	3622-SXXX-XXXXXX01
A1	2021/05/27	ADD Suck Area	XSR	x.xx ±0.25	CHECK	DATE	SIZE	A4	TITLE: 0.50mm BTB FEMALE SMT TYPE W/O LATCH
A0	2018/03/09	NEW	-----	x.xxx ±0.15	APPROVE	DATE	SHEET	1/1	Customer NO.
				Angle ± 3°			PROJ.		
				DIM TOL					

WCON
 Http: www.wcon.com

WCON-Dongguan
 Tel: +86 769 85358920
 Fax: +86 769 85358915
 E-mail: sales@wcon.com

WCON-Kunshan
 Tel: +86 512 57468408
 Fax: +86 512 57468468
 E-mail: salesks@wcon.com