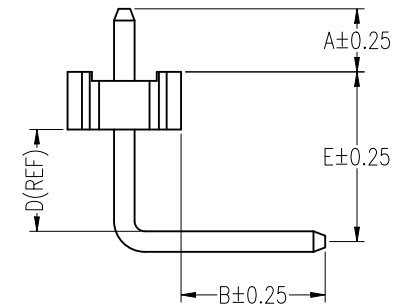
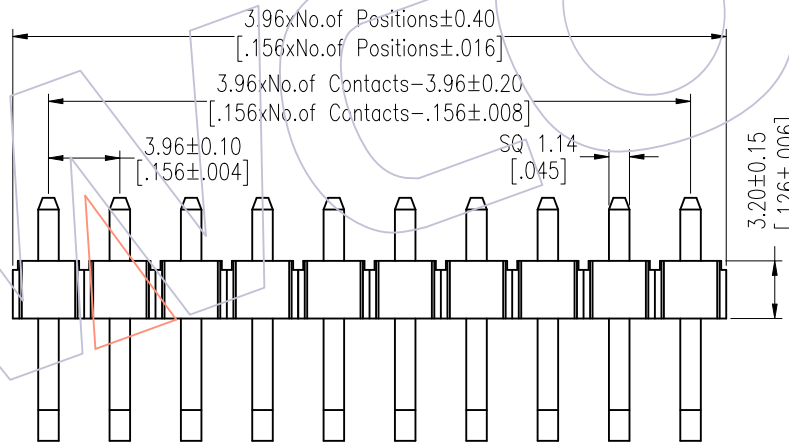
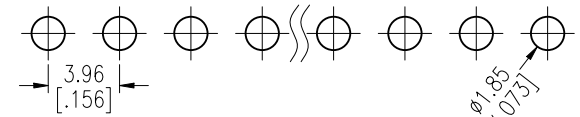
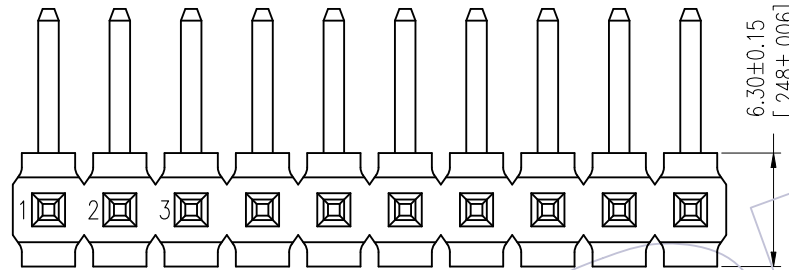


# HSF

Recommended P.C.B Layout (Top Side)  
(PCB BOARD TOLERANCE±0.05)

NOTES:  
Rated Current:7.0AMP.  
Contact Resistance:20mΩ Max.  
Withstand Voltage:1000V AC/DC  
Insulation Resistance:1000MΩ Min.  
Operation Temperature:-40°C to +105°C

Contact Material:Brass  
Contact Plating:Sn Over Ni  
Insulator Material:LCP+30%G.F UL94V-0 BK



## Ordering Information

1832-11 XX XX R XXX D 0 XX

No.of Pins Contact Plating Pin Length Insulator Packing Series No.  
02~20 SN=Tin L=A+B+D+6.3 D=LCP 0=PE Bag 01~99  
SM=Matte Tin Sid:235=23.5

Item	Pin Length	A	E	B	Mating
Standard	23.5	3.50	9.42	8.00	2889
Alternate					

REV	DATE	MODIFICATION DESCRIPTION	CHANGE	OPERATION	DRAW	DATE	SCALE	Fit	PART NO.
				X.X ±0.40	William Chen	2018/01/23	UNIT	mm [inch]	1832-11XXXXRXXXDXXX
A1	2018/01/23	MODIFY PART NO.	-----	X.XX ±0.25	CHECK	DATE	SIZE	A4	TITLE: 3.96 Pin Header, SINGLE ROW, R/A, PLANE BENDING, H=3.2
A0	2012/06/25	NEW	-----	X.XXX ±0.15	APPROVE	DATE	SHEET	1/1	Customer NO.
				Angle ± 3'			PROJ.		
				DIM TOL					

**WCON**  
Http: www.wcon.com

WCON-Dongguan Tel: +86 769 85358920 Fax: +86 769 85358915 E-mail: sales@wcon.com

WCON-Kunshan Tel: +86 512 57468408 Fax: +86 512 57468468 E-mail: salesks@wcon.com