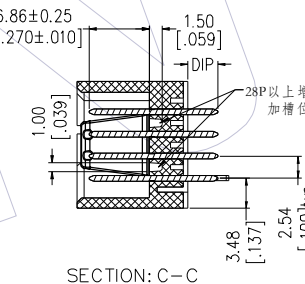
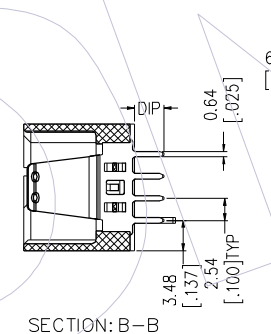
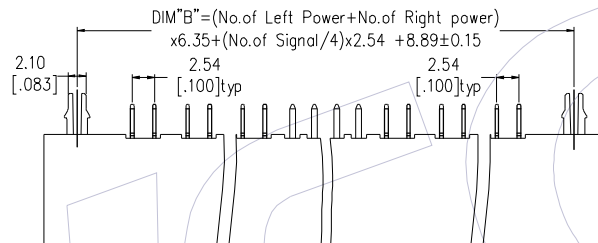
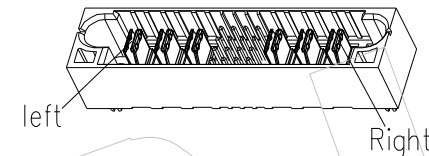
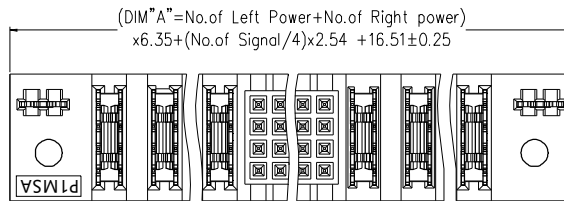


HSF

NOTES:

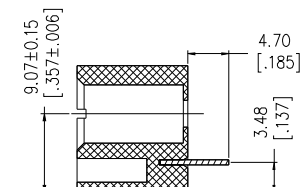
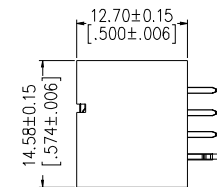
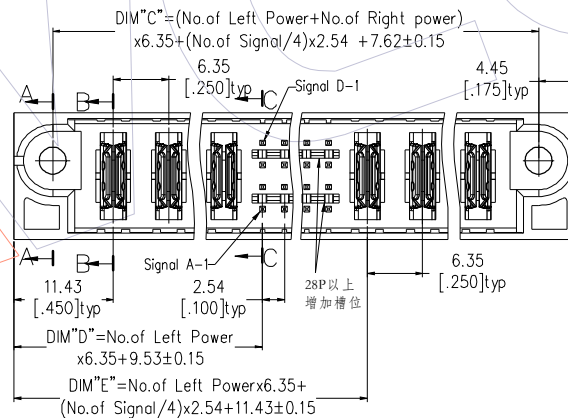
1. Insulator material: PA9T+33%GF, UL94V-0;
2. Terminal material: Copper Alloy;
Terminal Plating: Au/Sn Plated Over Nickel ;
3. Rated Voltage: Signal 50V; Power 600V
4. Rated Current: Power 30A; Signal 2.5A;
5. Contact Resistance:
Power 0.7mΩ Max; Signal 20mΩ Max;
6. Insulation Resistance: DC500V
Power 10000MΩ Min; Signal 500MΩ Min;
7. Insulation Withstand Voltage:
Power 2500VAC/1min; Signal 1000VAC/1min ;
8. Durability: 200 cycling;
9. Operation Temperature: -20°C to +105°C;



Ordering Information:

P1MS A - XX XX XX XX XX X X A I

No. Left Power: 01=1Pin, 20=20Pin
No. Right Power: 01=1Pin, 20=20Pin
Tail Options(DIP Type): A=3.43mm, B=2.29mm, C=4.19mm
Signal Contact Plated: S3=10u" Gold /Tin, S4=15u" Gold /Tin, S5=30u" Gold /Tin
Power Contact Plated: w3=10u" Gold /Matte Tin, w4=15u" Gold /Matte Tin, w5=30u" Gold /Matte Tin
Signal Contact Plated: S3=10u" Gold /Tin, S4=15u" Gold /Tin, S5=30u" Gold /Tin
Fixed Mode: M: W/T Lock, N: W/O Lock
Packing: A=Tray



Type	DIP
A	3.43 ^{+0.38} _{-0.25}
C	4.19 ^{+0.38} _{-0.25}

A3	2019/04/15	Update surface	OPERATION	DRAW	DATE	SCALE	FIT	PART NO. P1MSA-XXXXXXXXXXA1
A2	2018/09/15	Add Product Data Sheet	x.x ±0.40	Surong Xu	2019/04/15	UNIT	mm	
A1	2018/08/30	MODIFY P/N	x.xx ±0.25	CHECK	DATE	SIZE	A4	TITLE: PSP Spacing A 180° DIP MALE
A0	2018/03/06	NEW	x.xxx ±0.15	APPROVE	DATE	SHEET	1/4	(TYPE-1: Power+2.54Signal+Power)
REV	DATE	MODIFICATION DESCRIPTION	CHANGE	Angle ± 3°	DATE	PROJ.	Customer NO.	

WCON
Http: www.wcon.com

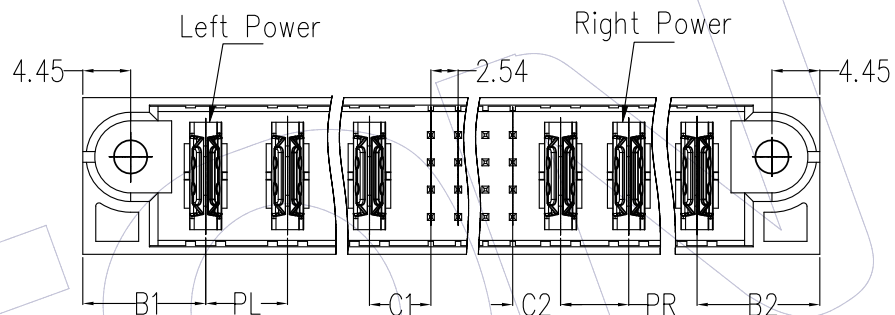
WCON-Dongguan Tel: +86 769 85358920 Fax: +86 769 85358915 E-mail: sales@wcon.com
WCON-Kunshan Tel: +86 512 57468408 Fax: +86 512 57468468 E-mail: salesks@wcon.com

HSF

△ Schematic diagram of terminal spacing

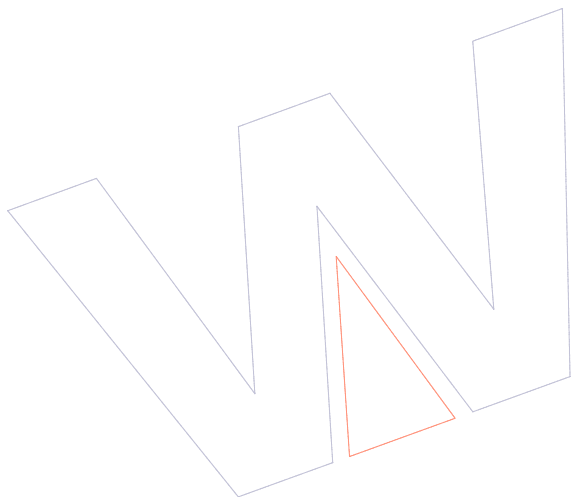
Ordering Information:
P1 MS A -XX XX XX XX XX X X A 1

See table "Spec code"



△

Spec code	Terminal spacing size					
	B1	PL	C1	C2	PR	B2
A	11.43	6.35	4.45	4.45	6.35	11.43
B	11.43	6.35	4.45	5.72	6.35	11.43
C	11.43	6.35	4.45	4.45	7.62	12.07
D	12.07	7.62	5.08	5.08	7.62	12.07
E	12.07	7.62	5.08	4.45	6.35	11.43
F	11.43	7.62	5.72	4.45	6.35	11.43



A3	2019/04/15	Update surface	—	OPERATION		DRAW Surong Xu	DATE 2019/04/15	SCALE UNIT	FIT mm inch	PART NO. P1MSA-XXXXXXXXXXA1 △		
A2	2018/09/15	Add Product Data Sheet	—	x.x	±0.40						CHECK	DATE
A1	2018/08/30	MODIFY P/N	—	x.xx	±0.25	APPROVE	DATE	SHEET 3/4	Customer NO.			
A0	2018/03/06	NEW	—	x.xxx	±0.15					REV	DATE	MODIFICATION DESCRIPTION

WCON
Http: www.wcon.com

WCON-Dongguan WCON-Kunshan
Tel: +86 769 85358920 Tel: +86 512 57468408
Fax: +86 769 85358915 Fax: +86 512 57468468
E-mail: sales@wcon.com E-mail: salesks@wcon.com

HSF

Product Data Sheet

No.	P/N	No. Left Power	No. Signal	No. Right Power	DIM "A"	DIM "B"	DIM "C"	DIM "D"	DIM "E"	DIM "F"	DIM "G"	DIM "H"	No.	P/N	No. Left Power	No. Signal	No. Right Power	DIM "A"	DIM "B"	DIM "C"	DIM "D"	DIM "E"	DIM "F"	DIM "G"	DIM "H"
1	P1MSA-112003XXXXXXA1	11	20	3	118.11	110.49	109.22	79.38	93.98	118.87	75.57	88.90	28	P1MSA-031202XXXXXXA1	3	12	2	55.88	48.26	46.99	28.58	38.10	56.64	24.77	33.02
2	P1MSA-108410XXXXXXA1	10	84	10	196.85	189.23	187.96	73.03	128.27	197.61	69.22	123.19	29	P1MSA-030403XXXXXXA1	3	4	3	57.15	49.53	48.26	28.58	33.02	57.91	24.77	27.94
3	P1MSA-083208XXXXXXA1	8	32	8	138.43	130.81	129.54	60.33	82.55	139.19	56.52	77.47	30	P1MSA-029602XXXXXXA1	2	96	2	102.87	95.25	93.98	22.23	85.09	103.63	18.42	80.01
4	P1MSA-082008XXXXXXA1	8	20	8	130.81	123.19	121.92	60.33	74.93	131.57	56.52	69.85	31	P1MSA-028002XXXXXXA1	2	80	2	92.71	85.09	83.82	22.23	74.93	93.47	18.42	69.85
5	P1MSA-081608XXXXXXA1	8	16	8	128.27	120.65	119.38	60.33	72.39	129.03	56.52	67.31	32	P1MSA-026002XXXXXXA1	2	60	2	80.01	72.39	71.12	22.23	62.23	80.77	18.42	57.15
6	P1MSA-073207XXXXXXA1	7	32	7	125.73	118.11	116.84	53.98	76.20	126.49	50.17	71.12	33	P1MSA-024802XXXXXXA1	2	48	2	72.39	64.77	63.50	22.23	54.61	73.15	18.42	49.53
7	P1MSA-062406XXXXXXA1	6	24	6	107.95	100.33	99.06	47.63	64.77	108.71	43.82	59.69	34	P1MSA-024002XXXXXXA1	2	40	2	67.31	59.69	58.42	22.23	49.53	68.07	18.42	44.45
8	P1MSA-052405XXXXXXA1	5	24	5	95.25	87.63	86.36	41.28	58.42	96.01	37.47	53.34	35	P1MSA-023202XXXXXXA1	2	32	2	62.23	54.61	53.34	22.23	44.45	62.99	18.42	39.37
9	P1MSA-04A504XXXXXXA1	4	120	4	143.51	135.89	134.62	34.93	113.03	144.27	31.12	107.95	36	P1MSA-022402XXXXXXA1	2	24	2	57.15	49.53	48.26	22.23	39.37	57.91	18.42	34.29
10	P1MSA-044804XXXXXXA1	4	48	4	97.79	90.17	88.90	34.93	67.31	98.55	31.12	62.23	37	P1MSA-022002XXXXXXA1	2	20	2	54.61	46.99	45.72	22.23	36.83	55.37	18.42	31.75
11	P1MSA-043607XXXXXXA1	4	36	7	109.22	101.60	100.33	34.93	59.69	109.98	31.12	54.61	38	P1MSA-021602XXXXXXA1	2	16	2	52.07	44.45	43.18	22.23	34.29	52.83	18.42	29.21
12	P1MSA-043204XXXXXXA1	4	32	4	87.63	80.01	78.74	34.93	57.15	88.39	31.12	52.07	39	P1MSA-021202XXXXXXA1	2	12	2	49.53	41.91	40.64	22.23	31.75	50.29	18.42	26.67
13	P1MSA-042804XXXXXXA1	4	28	4	85.09	77.47	76.20	34.93	54.61	85.85	31.12	49.53	40	P1MSA-020802XXXXXXA1	2	8	2	46.99	39.37	38.10	22.23	29.21	47.75	18.42	24.13
15	P1MSA-042404XXXXXXA1	4	24	4	82.55	74.93	73.66	34.93	52.07	83.31	31.12	46.99	41	P1MSA-020402XXXXXXA1	2	4	2	44.45	36.83	35.56	22.23	26.67	45.21	18.42	21.59
16	P1MSA-041204XXXXXXA1	4	12	4	74.93	67.31	66.04	34.93	44.45	75.69	31.12	39.37	42	P1MSA-01B301XXXXXXA1	1	148	1	123.19	115.57	114.30	15.88	111.76	123.95	12.07	106.68
17	P1MSA-041202XXXXXXA1	4	12	2	62.23	54.61	53.34	34.93	44.45	62.99	31.12	39.37	43	P1MSA-01A701XXXXXXA1	1	128	1	110.49	102.87	101.60	15.88	99.06	111.25	12.07	93.98
18	P1MSA-040804XXXXXXA1	4	8	4	72.39	64.77	63.50	34.93	41.91	73.15	31.12	36.83	44	P1MSA-01A001XXXXXXA1	1	100	1	92.71	85.09	83.82	15.88	81.28	93.47	12.07	76.20
19	P1MSA-040404XXXXXXA1	4	4	4	69.85	62.23	60.96	34.93	39.37	70.61	31.12	34.29	45	P1MSA-016001XXXXXXA1	1	60	1	67.31	59.69	58.42	15.88	55.88	68.07	12.07	50.80
20	P1MSA-040402XXXXXXA1	4	4	2	57.15	49.53	48.26	34.93	39.37	57.91	31.12	34.29	46	P1MSA-014801XXXXXXA1	1	48	1	59.69	52.07	50.80	15.88	48.26	60.45	12.07	43.18
21	P1MSA-034803XXXXXXA1	3	48	3	85.09	77.47	76.20	28.58	60.96	85.85	24.77	55.88	47	P1MSA-013201XXXXXXA1	1	32	1	49.53	41.91	40.64	15.88	38.10	50.29	12.07	33.02
22	P1MSA-034003XXXXXXA1	3	40	3	80.01	72.39	71.12	28.58	55.88	80.77	24.77	50.80	48	P1MSA-012401XXXXXXA1	1	24	1	44.45	36.83	35.56	15.88	33.02	45.21	12.07	27.94
23	P1MSA-033203XXXXXXA1	3	32	3	74.93	67.31	66.04	28.58	50.80	75.69	24.77	45.72	49	P1MSA-012001XXXXXXA1	1	20	1	41.91	34.29	33.02	15.88	30.48	42.67	12.07	25.40
24	P1MSA-032408XXXXXXA1	3	24	8	101.60	93.98	92.71	28.58	45.72	102.36	24.77	40.64	50	P1MSA-011601XXXXXXA1	1	16	1	39.37	31.75	30.48	15.88	27.94	40.13	12.07	22.86
25	P1MSA-032403XXXXXXA1	3	24	3	69.85	62.23	60.96	28.58	45.72	70.61	24.77	40.64	51	P1MSA-011201XXXXXXA1	1	12	1	36.83	29.21	27.94	15.88	25.40	37.59	12.07	20.32
26	P1MSA-031603XXXXXXA1	3	16	3	64.77	57.15	55.88	28.58	40.64	65.53	24.77	35.56	52	P1MSA-010801XXXXXXA1	1	8	1	34.29	26.67	25.40	15.88	22.86	35.05	12.07	17.78
27	P1MSA-031203XXXXXXA1	3	12	3	62.23	54.61	53.34	28.58	38.10	62.99	24.77	33.02	53	P1MSA-010401XXXXXXA1	1	4	1	31.75	24.13	22.86	15.88	20.32	32.51	12.07	15.24

A3	2019/04/15	Update surface	—	OPERATION	DRAW	DATE	SCALE	FIT	PART NO.		 Http: www.wcon.com WCON-Dongguan WCON-Kunshan Tel: +86 769 85358920 Tel: +86 512 57468408 Fax: +86 769 85358915 Fax: +86 512 57468468 E-mail: sales@wcon.com E-mail: salesks@wcon.com
A2	2018/09/15	Add Product Data Sheet	—	X.X	Surong Xu	2019/04/15	UNIT	mm	P1MSA-XXXXXXXXXXA1 		
A1	2018/08/30	MODIFY P/N	—	X.XX	CHECK	DATE	SIZE	A4	TITLE:		
A0	2018/03/06	NEW	—	X.XXX	APPROVE	DATE	SHEET	4/4	PSP Spacing A 180° DIP MALE  (TYPE-1:Power+2.54Signal+Power)		
REV	DATE	MODIFICATION DESCRIPTION	CHANGE	Angle DIM	± 3° TOL	DATE	PROJ.		Customer NO.		